



1204 Series Semi-Pneumatic & Solid Rubber Wheel

- Good for lawn mowers, wooden machinery, generators, two-wheeled carts, etc.

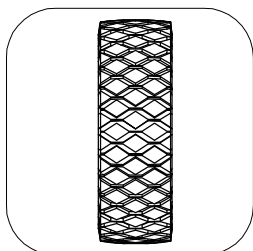
Various Tread patterns available, please consult the factory.

Rims can be plastic or steel (painted or zinc-plated)

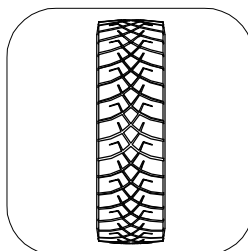
OEM requests and tailored-made wheels in all sizes are welcome.



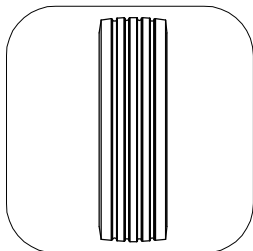
» Features



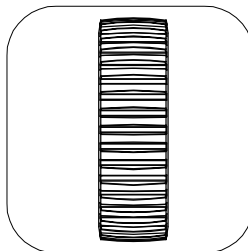
1) Diamond Tread Profile



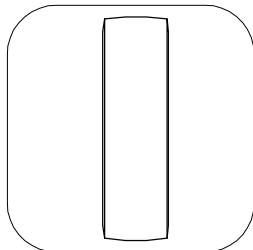
2) X Tread Profile



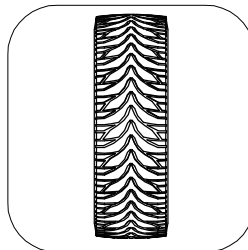
3) Rib Tread Profile



4) Gear Tread Profile



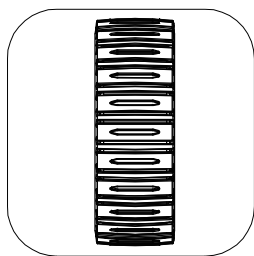
5) Smooth Tread Profile



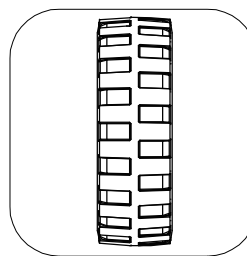
6) V Tread Profile



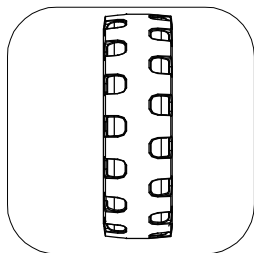
» Features



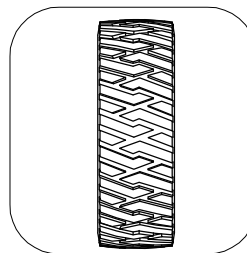
7) G-2 Tread Profile



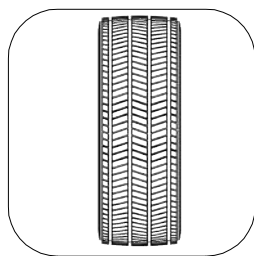
8) Stud Tread Profile



9) G-3 Tread Profile



10) L Tread Profile



11) Lateral Tread Profile

Solid Rubber Wheel with Steel Rim (Centered Hub)

Wheel Diameter	Wheel Width	Hub Length (with bearing)	Ball Bearing							Tread Profile	Tread Thickness	Hub Color						Load
			Precision ball bearing				Flanged ball bearing					Black	White	Red	Silver	Zinc Plated	Yellow	
			12mm	6002 (15mm)	6203 (17mm)	6904 (20mm)	1/2" (12.7mm)	5/8" (15.88mm)	3/4" (19.05mm)									
6"	1-1/2" (37mm)	1-17/32" (39mm)					V			Rib	Thick Tread		V	V				60kg (130 lbs)
		1-27/32" (47mm)					V	V	V	Rib			V	V				
7"	1-1/2" (35mm)	2" (51mm)					V	V	V	Rib	Thick Tread		V	V				70kg (155 lbs)
8"	1-3/4" (42mm)	2" (51mm)					V	V	V	Rib	Thick Tread		V	V				70kg (155 lbs)
	1-3/4" (42mm)	2-1/4" (57mm)					V			Rib			V	V				
8"	2-1/2" (62mm)	2-11/64" (55.2mm)						V	V	Rib	Thick Tread			V		V		70kg (155 lbs)
10"	1-3/4" (41mm)	2-3/16" (55.5mm)					V	V	V	Rib	Thick Tread		V	V	V			70kg (155 lbs)
10"	2-1/2" (57mm)	2-3/4" (70mm)						V	V	Rib	Thick Tread			V				110kg (240 lbs)
10"	2-3/4" (65mm)	2-3/4" (70mm)						V	V	Rib	Thick Tread				V	V		115kg (255 lbs)
12"	1-3/4" (43mm)	2-21/64" (59mm)					V			Rib	Thick Tread			V				70kg (155 lbs)



Solid Rubber Wheel with Steel Rim (Offset Hub)

Wheel Diameter	Wheel Width	Hub Length (with bearing)	Ball Bearing							Tread Profile	Tread Thickness	Hub Color						Load
			Precision ball bearing				Flanged ball bearing					Black	White	Red	Silver	Zinc Plated	Yellow	
			12mm	6002 (15mm)	6203 (17mm)	6904 (20mm)	1/2" (12.7mm)	5/8" (15.88mm)	3/4" (19.05mm)									
6"	1-1/2" (36mm)	1-29/64" (37mm)					V	V	V	Rib	Thick Tread		V	V			60kg (130 lbs)	
7"	1-1/2" (35mm)	1-31/64" (37.5mm)					V	V	V	Rib	Thick Tread		V	V			70kg (155 lbs)	
8"	1-3/4" (42 mm)	1-1/2" (38mm)		V						Rib	Thick Tread		V				70kg (155 lbs)	
	1-3/4" (42mm)	1-31/64" (37.5mm)					V	V	V	Rib			V	V				
10"	1-3/4" (41mm)	1-39/64" (41mm)					V	V	V	Rib	Thick Tread		V	V			70kg (155 lbs)	
10"	2-1/2" (57mm)	2-9/64" (54mm)						V	V	Rib	Thick Tread			V			110kg (240 lbs)	
10"	2-3/4" (65mm)	2-9/64" (54mm)						V	V	Rib	Thick Tread			V	V		115kg (255 lbs)	

Solid Rubber Wheel with Plastic Rim (Centered Hub)

Wheel Diameter	Wheel Width	Hub Length (with bearing)	Plain Bearing														Double Ball Bearing				Tread Profile	Tread Thickness	Hub Color											Load				
			10.2 mm	10.5 mm	12.7 mm	12.8 mm	12.85 mm	12.9 mm	13 mm	14.5 mm	14.8 mm	15.1 mm	16 mm	16.2 mm	17.5 mm	41.8 mm	6004 (20 mm)	6201 (12.75 mm)	6202 (15.88 mm)	6202 (20 mm)			Dark Gray	Light Gray	Cool Gray	Gray	Yellow	Black	White	Red	Green	Blue						
6"	1-1/2" (35mm)	1-17/32" (39mm)							V															Rib	Thick Tread							V	V					55kg (120 lbs)
7"	1-1/2" (35mm)	1-31/64" (37.5mm)			V																			Rib	Regular Tread							V					55kg (120 lbs)	
7"	1-1/2" (35mm)	1-31/64" (37.5mm)			V																			Gear	Thick Tread							V					55kg (120 lbs)	
8"	1-3/4" (42.5mm)	1-31/64" (37.5mm)			V																			Rib	Thick Tread							V	V				55kg (120 lbs)	
8"	1-3/4" (42.5mm)	1-15/64" (56mm)											V											Rib	Thick Tread							V					55kg (120 lbs)	
10"	1-3/4" (41mm)	2" (50mm)			V																			Rib	Thick Tread							V			V		65kg (140 lbs)	



Solid Rubber Wheel with Plastic Rim (Offset Hub)

Wheel Diameter	Wheel Width	Hub Length (with bearing)	Plain Bearing														Double Ball Bearing				Tread Profile	Tread Thickness	Hub Color										Load
			10.2 mm	10.5 mm	12.7 mm	12.8 mm	12.85 mm	12.9 mm	13 mm	14.5 mm	14.8 mm	15.1 mm	16 mm	16.2 mm	17.5 mm	41.8 mm	6004 (20 mm)	6201 (12.75 mm)	6202 (15.88 mm)	6202 (20 mm)			Dark Gray	Light Gray	Cool Gray	Gray	Yellow	Black	White	Red	Green	Blue	
6"	1-1/2" (35mm)	1-9/32" (32mm)							V												Rib	Thick Tread				V							55kg (120 lbs)
6"	1-1/2" (35mm)	1-3/8" (34.5mm)				V															Rib	Thick Tread						V					55kg (120 lbs)
7"	1-1/2" (35mm)	1-41/64" (41mm)				V															Rib	Regular Tread					V						55kg (120 lbs)
7"	1-1/2" (35mm)	1-41/64" (41mm)				V															Rib	Regular Tread					V						55kg (120 lbs)
8"	1-3/4" (42mm)	1-23/64" (34mm)			V																Rib	Thick Tread	V										55kg (120 lbs)
8"	1-3/4" (42mm)	1-33/64" (38mm)													V						Rib	Thick Tread								V			55kg (120 lbs)
8"	1-3/4" (42mm)	1-41/64" (39mm)					V														Rib	Thick Tread					V						55kg (120 lbs)
8"	1-3/4" (42mm)	1-41/64" (39mm)				V	V														Rib	Thick Tread				V	V		V				55kg (120 lbs)
8"	1-3/4" (42mm)	1-41/64" (41mm)				V															Rib	Thick Tread						V					55kg (120 lbs)
8"	1-3/4" (42mm)	1-41/64" (41mm)								V											Rib	Thick Tread					V						55kg (120 lbs)
8"	2" (46mm)	2-9/64" (53.5mm)																			Rib	Thick Tread				V							55kg (120 lbs)
10"	1-3/4" (41mm)	1-17/32" (38.4mm)				V															Rib	Thick Tread						V					65kg (145 lbs)
10"	1-3/4" (41mm)	1-37/64" (39.6mm)				V										V					Gear	Thick Tread					V						65kg (145 lbs)
12"	1-3/4" (43mm)	1-37/64" (39.6mm)									V										Rib	Thick Tread				V	V						80kg (175 lbs)



Semi-Pneumatic Rubber Wheel with Steel Rim (Centered Hub)

Wheel Diameter	Wheel Width	Hub Length (with bearing)	Ball Bearing							Tread Profile	Tread Thickness	Hub Color						Load
			Precision ball bearing				Flanged ball bearing					Black	White	Red	Silver	Zinc Plated	Yellow	
			12mm	6002 (15mm)	6203 (17mm)	6904 (20mm)	1/2" (12.7mm)	5/8" (15.88mm)	3/4" (19.05mm)									
6"	1-1/2" (37mm)	1-17/32" (39mm)						V	V	Rib	Thick Tread		V	V				25kg (55 lbs)
6"	1-1/2" (37mm)	1-17/32" (39mm)						V	V	Diamond	Thick Tread		V	V				25kg (55 lbs)
6"	1-1/2" (37mm)	1-27/32" (47mm)						V	V	Rib	Thick Tread		V	V				25kg (55 lbs)
6"	1-1/2" (37mm)	1-27/32" (47mm)						V	V	Diamond	Thick Tread		V	V				25kg (55 lbs)
6"	1-4/5" (45mm)	2-13/64" (56mm)					V			Diamond	Thick Tread		V	V				30kg (65 lbs)
7"	1-1/2" (36mm)	1-31/64" (37.5mm)					V	V	V	Rib	Thick Tread		V	V				30kg (65 lbs)
7"	1-1/2" (36mm)	1-31/64" (37.5mm)					V	V	V	Diamond	Thick Tread		V	V				30kg (65 lbs)
7"	1-1/2" (36mm)	2" (51mm)					V	V	V	Rib	Thick Tread		V	V				30kg (65 lbs)
7"	1-1/2" (36mm)	2" (51mm)					V	V	V	Diamond	Thick Tread		V	V				30kg (65 lbs)
7"	1-3/4" (44.5mm)	1-31/64" (37.5mm)					V	V	V	Diamond	Thick Tread		V	V				30kg (65 lbs)
7"	1-3/4" (44.5mm)	2" (51mm)					V	V	V	Diamond	Thick Tread		V	V				30kg (65 lbs)
8"	1-3/4" (42mm)	1-31/64" (37.5mm)					V	V	V	Diamond	Thick Tread		V					35kg (80 lbs)
		2" (51mm)					V	V	V	Diamond			V	V				35kg (80 lbs)
8"	1-3/4" (43mm)	1-31/64" (37.5mm)					V	V	V	Rib	Thick Tread		V					35kg (80 lbs)
		2" (51mm)					V	V	V	Rib			V	V				35kg (80 lbs)
10"	1-3/4" (41mm)	1-39/64" (41mm)					V	V	V	Rib	Thick Tread		V	V				45kg (100 lbs)
10"	1-3/4" (41mm)	1-39/64" (41mm)					V	V	V	Diamond	Thick Tread		V	V				45kg (100 lbs)
10"	2-1/2" (57mm)	1-55/64" (47.3mm)						V	V	Rib	Thick Tread			V				70kg (155 lbs)
10"	2-3/4" (62mm)	2-9/64" (54mm)						V	V	Rib	Thick Tread				V	V		70kg (155 lbs)
10"	3-25/64" (85mm)	2-19/32" (65mm)			V	V		V	V	Lateral	Thick Tread			V	V	V	V	90kg (200 lbs)
12"	1-3/4" (43mm)	1-39/64" (56mm)					V			Rib	Thick Tread			V				35kg (80 lbs)



Semi-Pneumatic Rubber Wheel with Steel Rim (Offset Hub)

Wheel Diameter	Wheel Width	Hub Length (with bearing)	Ball Bearing							Tread Profile	Tread Thickness	Hub Color						Load
			Precision ball bearing				Flanged ball bearing					Black	White	Red	Silver	Zinc Plated	Yellow	
			12mm	6002 (15mm)	6203 (17mm)	6904 (20mm)	1/2" (12.7mm)	5/8" (15.88mm)	3/4" (19.05mm)									
6"	1-1/2" (37mm)	1-29/64" (37mm)					V	V	V	Rib	Thick Tread		V	V				25kg (55 lbs)
6"	1-1/2" (37mm)	1-29/64" (37mm)					V	V	V	Diamond	Thick Tread		V	V				25kg (55 lbs)
7"	1-1/2" (36mm)	1-31/64" (37.5mm)					V	V	V	Rib	Thick Tread		V	V				30kg (65 lbs)
7"	1-1/2" (36mm)	1-31/64" (37.5mm)					V	V	V	Diamond	Thick Tread		V	V				30kg (65 lbs)
7"	1-3/4" (44.5mm)	1-31/64" (37.5mm)					V	V	V	Diamond	Thick Tread		V	V				30kg (65 lbs)
8"	1-3/4" (42mm)	1-31/64" (37.5mm)					V	V	V	Diamond	Thick Tread		V	V				35kg (80 lbs)
		1-1/2" (38mm)		V						Diamond			V					35kg (80 lbs)
8"	1-3/4" (43mm)	1-31/64" (37.5mm)					V	V	V	Rib	Thick Tread		V	V				35kg (80 lbs)
		1-1/2" (38mm)		V						Rib			V					35kg (80 lbs)
10"	1-3/4" (41mm)	1-39/64" (41mm)					V	V	V	Rib	Thick Tread		V	V				45kg (100 lbs)
10"	2-1/2" (57mm)	1-55/64" (47.3mm)						V	V	Rib	Thick Tread			V				70kg (155 lbs)
10"	3-25/64" (85mm)	2-19/32" (65mm)			V	V				Lateral	Thick Tread			V	V	V	V	80kg (175 lbs)



Semi-Pneumatic Rubber Wheel with Plastic Rim (Centered Hub)

Wheel Diameter	Wheel Width	Hub Length (with bearing)	Plain Bearing														Double Ball Bearing				Tread Profile	Tread Thickness	Hub Color										Load
			10.2 mm	10.5 mm	12.7 mm	12.8 mm	12.85 mm	12.9 mm	13 mm	14.5 mm	14.8 mm	15.1 mm	16 mm	16.2 mm	17.5 mm	41.8 mm	6004 (20 mm)	6201 (12.75 mm)	6202 (15.88 mm)	6202 (20 mm)			Dark Gray	Light Gray	Cool Gray	Gray	Yellow	Black	White	Red	Green	Blue	
6"	1-1/2" (34.5mm)	1-31/64" (37.5mm)			V																Diamond	Regular Tread				V	V	V					25kg (55 lbs)
6"	1-1/2" (34.5mm)	1-31/64" (37.5mm)								V											Rib	Thick Tread							V				25kg (55 lbs)
6"	1-1/2" (34.5mm)	1-31/64" (37.5mm)								V											Diamond	Thick Tread								V			25kg (55 lbs)
7"	1-1/2" (35mm)	1-31/64" (37.5mm)			V																Rib	Regular Tread							V				30kg (65 lbs)
7"	1-1/2" (35mm)	1-15/64" (56mm)												V							Rib	Regular Tread							V				30kg (65 lbs)
7"	1-1/2" (37mm)	1-31/64" (37.5mm)			V																Diamond	Regular Tread							V				30kg (65 lbs)
8"	1-3/4" (43mm)	1-31/64" (37.5mm)			V																Diamond	Thick Tread						V	V				35kg (80 lbs)
8"	1-3/4" (44.5mm)	1-31/64" (37.5mm)			V																Rib	Thick Tread						V	V				35kg (80 lbs)
8"	1-3/4" (44.5mm)	1-31/64" (37.5mm)			V																Gear	Thick Tread						V	V				35kg (80 lbs)
8"	2-1/2" (53.5mm)	2" (51mm)																	V		Rib	Thick Tread				V							35kg (80 lbs)
10"	1-3/4" (41mm)	2" (50mm)			V																Rib	Thick Tread							V				45kg (100 lbs)



Semi-Pneumatic Rubber Wheel with Plastic Rim (Offset Hub)

Wheel Diameter	Wheel Width	Hub Length (with bearing)	Plain Bearing																Double Ball Bearing				Tread Profile	Tread Thickness	Hub Color											Load
			10.2 mm	10.5 mm	12.7 mm	12.8 mm	12.85 mm	12.9 mm	13 mm	14.5 mm	14.8 mm	15.1 mm	16 mm	16.2 mm	17.5 mm	41.8 mm	6004 (20 mm)	6201 (12.75 mm)	6202 (15.88 mm)	6202 (20 mm)	Dark Gray	Light Gray			Cool Gray	Gray	Yellow	Black	White	Red	Green	Blue				
6"	1-1/2" (33mm)	1-13/64" (30.25mm)						V														Stud	Thick Tread	V	V									25kg (55 lbs)		
6"	1-1/2" (37mm)	1-3/8" (34.5mm)				V																Diamond	Thick Tread						V					25kg (55 lbs)		
6"	1-1/2" (37.5mm)	1-39/64" (40.5mm)								V												G-2	Thick Tread				V							25kg (55 lbs)		
6"	1-1/2" (38mm)	1-3/8" (34.5mm)				V																Smooth	Thick Tread						V					25kg (55 lbs)		
6.17"	1-1/2" (37.3mm)	1-7/8" (47.2mm)		V																		Gear	Thick Tread				V							25kg (55 lbs)		
7"	1-1/2" (38mm)	1-19/64" (32.5mm)																V				Diamond	Regular Tread						V					30kg (65 lbs)		
7"	1-1/2" (38mm)	1-25/64" (34.9mm)				V																Diamond	Regular Tread	V										30kg (65 lbs)		
7"	1-1/2" (38mm)	1-25/64" (34.9mm)				V																Smooth	Regular Tread					V						30kg (65 lbs)		
7"	1-1/2" (38mm)	1-7/16" (36mm)																V				Diamond	Regular Tread			V			V					30kg (65 lbs)		
7"	1-1/2" (38mm)	1-7/16" (36mm)			V																	X Profile	Regular Tread				V		V					30kg (65 lbs)		
7"	1-1/2" (38mm)	1-41/64" (39mm)								V												Diamond	Regular Tread				V							30kg (65 lbs)		
7"	1-1/2" (38mm)	1-41/64" (41mm)									V											Diamond	Regular Tread						V					30kg (65 lbs)		
8"	1-3/4" (41.5mm)	1-25/64" (34.9mm)				V																Gear	Thick Tread						V					35kg (80 lbs)		
8"	1-3/4" (41.5mm)	1-41/64" (39mm)								V												Gear	Thick Tread						V					35kg (80 lbs)		
8"	1-3/4" (42mm)	1-41/64" (39mm)									V											Rib	Thick Tread						V					35kg (80 lbs)		
8"	1-3/4" (43mm)	1-3/32" (27mm)						V										V				Stud	Thick Tread	V			V							35kg (80 lbs)		
8"	1-3/4" (43mm)	1-5/16" (33mm)																V				Diamond	Thick Tread			V			V					35kg (80 lbs)		
8"	1-3/4" (43mm)	1-25/64" (34.9mm)				V																Diamond	Thick Tread						V					35kg (80 lbs)		
8"	1-3/4" (43mm)	1-25/64" (34.9mm)				V																Gear	Thick Tread						V					35kg (80 lbs)		
8"	1-3/4" (43mm)	1-27/64" (36mm)																V				Rib	Regular Tread		V				V					35kg (80 lbs)		
8"	1-3/4" (43mm)	1-15/32" (37mm)																V				Diamond	Thick Tread				V							35kg (80 lbs)		
8"	1-3/4" (43mm)	1-33/64" (38mm)				V										V						Diamond	Thick Tread				V					V		35kg (80 lbs)		
8"	1-3/4" (43mm)	1-33/64" (38mm)				V										V						Diamond	Thick Tread					V				V		35kg (80 lbs)		
8"	1-3/4" (43mm)	1-41/64" (39mm)																V				Diamond	Thick Tread				V							35kg (80 lbs)		
8"	1-3/4" (43mm)	1-41/64" (39mm)								V												Diamond	Thick Tread				V		V	V	V			35kg (80 lbs)		
8"	1-3/4" (43mm)	1-41/64" (40.9mm)				V																Diamond	Thick Tread						V					35kg (80 lbs)		
8"	1-3/4" (44mm)	1-25/64" (34.9mm)				V																Smooth	Thick Tread						V					35kg (80 lbs)		
8"	1-3/4" (44mm)	1-27/64" (36mm)																V				Diamond	Regular Tread			V			V					35kg (80 lbs)		



Semi-Pneumatic Rubber Wheel with Plastic Rim (Offset Hub)

Wheel Diameter	Wheel Width	Hub Length (with bearing)	Plain Bearing														Double Ball Bearing				Tread Profile	Tread Thickness	Hub Color										Load
			10.2 mm	10.5 mm	12.7 mm	12.8 mm	12.85 mm	12.9 mm	13 mm	14.5 mm	14.8 mm	15.1 mm	16 mm	16.2 mm	17.5 mm	41.8 mm	6004 (20 mm)	6201 (12.75 mm)	6202 (15.88 mm)	6202 (20 mm)			Dark Gray	Light Gray	Cool Gray	Gray	Yellow	Black	White	Red	Green	Blue	
8"	1-3/4" (44.5mm)	1-5/16" (33mm)																V			V Profile	Thick Tread				V							35kg (80 lbs)
8"	2" (52mm)	1-23/64" (34.5mm)							V												G-2	Thick Tread				V							35kg (80 lbs)
8"	2" (52mm)	1-23/64" (34.5mm)							V												G-2	Thick Tread							V				35kg (80 lbs)
8"	2" (54mm)	1-9/32" (32.5mm)					V														G-3	Thick Tread				V							35kg (80 lbs)
8"	2" (55mm)	1-33/64" (38mm)									V				V						Stud	Thick Tread				V							35kg (80 lbs)
8"	2.5" (56.6mm)	2-1/8" (54mm)																	V		Rib	Thick Tread				V							35kg (80 lbs)
8"	2.5" (63.5mm)	1-61/64" (49.6mm)	V																		L Profile	Thick Tread				V							35kg (80 lbs)
10"	1.5" (38.5mm)	1-9/16" (39.6mm)							V												Diamond	Thick Tread				V							45kg (100 lbs)
10"	1-3/4" (41mm)	1-1/2" (38mm)								V											Diamond	Thick Tread				V		V					45kg (100 lbs)
10"	1-3/4" (41mm)	1-1/2" (38mm)							V												Diamond	Thick Tread							V				45kg (100 lbs)
10"	1-3/4" (44.5mm)	1-7/16" (36mm)			V																X Profile	Thick Tread				V	V						45kg (100 lbs)
10"	2" (50.8mm)	1-9/16" (39.6mm)							V												Diamond	Thick Tread				V							50kg (110 lbs)
11"	1-3/4" (45mm)	1-13/64" (30mm)											V								Rib	Thick Tread						V					45kg (100 lbs)
12"	1-3/4" (44.5mm)	1-17/64" (32mm)				V					V										G-2	Thick Tread				V							45kg (100 lbs)