

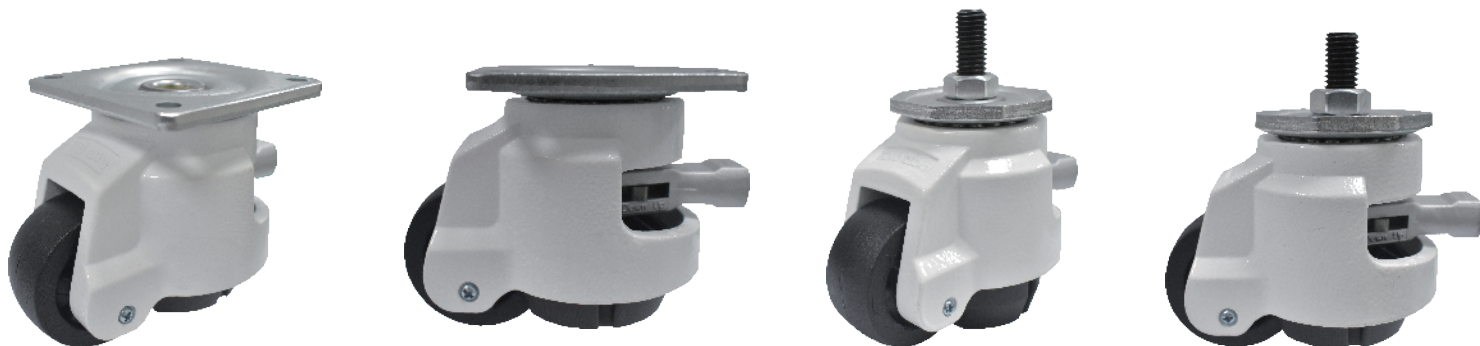


1169-1 Series

Height Adjustment Caster with adjustable handle

- By turning the handle, one can easily move up or down the caster to reach the desired horizontal levelness, on the equipment. The height adjustment caster with adjustable handle series casters are suitable for electrical automation equipment, semiconductor equipment, medical machinery, other machine tools, and cabinet equipment. They are suitable for equipment support requirements below 3 tons, with professional features such as heavy-duty support, horizontal adjustment, mobility, and environmentally friendly cleaning. Customization services are available according to customer needs. For details, please contact the factory.

Load
250-750 kg



» Wheel Options



PA+ Glass Fiber wheel






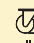

» TOP PLATE SIZE AND BOLT HOLE SPACING

Size	Top Plate Size	Bolt Hole Spacing	Attaching Bolt Size
60F	73 x 73 mm (2-7/8" x 2-7/8")	58 x 58 mm (2-1/4" x 2-1/4")	M6
80F	90 x 90mm (3-1/2" x 3-1/2")	70 x 70 mm (2-3/4" x 2-3/4")	M8
100F	97 x 97mm (3-7/8" x 3-7/8")	70 x 70 mm (2-3/4" x 2-3/4")	M10

» THREADED STEM SPECIFICATION

Size	Threaded Size	Size	Threaded Size
60S	M12x40-P1.75	80S 、 100S	M14x40-P2



Size	 Diameter×Width	 Load	 Material	 Item No.			 Bearing	 Overall Height	 Swivel radius
				Fixed	Swivel	Brake			
60	50mm x 25mm (2" x 1")	250kgs (551 lbs)	PA+ Glass Fiber wheel	—	1169-0200-07-2	—	N/A	86+10mm (3-3/8")	63mm
80	60mm x 32mm (2-1/2" x 1-1/4")	500kgs (1102 lbs)	PA+ Glass Fiber wheel	—	1169-0250-07-2	—		106+10mm (4-1/8")	75mm
100	75mm x 32mm (3" x 1-1/4")	750kgs (1653lbs)	PA+ Glass Fiber wheel	—	1169-0300-07-2	—		120+12mm (4-3/4")	90.5mm

Using standard:

*The load-bearing standard for 4pcs caster support is twice the load-bearing capacity of a single caster.

** Dynamic loading should be on a flat surface, walking speed \leq 1km/h, short-distance walking.