



116S Series

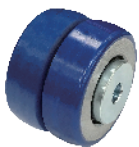
AMR/AGV- 7 Shock Absorbing Caster (Medium Duty)

Load
70 - 200 kg

- AMR/AGV-7 Shock-absorbing caster series is suitable for product in industries such as robotic, AGV/AMR, forklifts, logistics, medical care, and electric gates. The caster series offers the flexibility of fitting a variety of top plates if needed. This shock absorbing caster series is also designed for price sensitive customer, enabling the customer to have high-quality and high-performance products at a more favorable price. The AMR/AGV-7 shock-absorbing caster has a high load-bearing capacity that maximizes at 200 kgs and is ideal for industries that require small/ low gravity caster with high performance. We can also customize the caster based on customers' request. Please contact the factory for details.



» Wheel Options



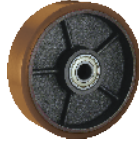
ZQPU(Dual Wheels)



QPU(Dual Anti-Static Wheels)



QPU on AL Core



QPU



Resilient Resolute Wheel(Blue tread)



W Resolute








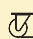

Ball Bearing

*Other Anti-Static Wheels Available, Please Contact The Factory

» TOP PLATE SIZE AND BOLT HOLE SPACING

Suffix	Top Plate Size	Bolt Hole Spacing	Attaching Bolt Size
1	63 x 92 mm (2-1/2" x 3- 5/8")	45 x 75 mm (1-3/4" x 3")	8 mm (5/16")
2	80 x 104mm (3-5/32" x 4-3/32")	59 x80~82mm (2-3/8" x 3-5/32"~3-7/32")	8 mm (5/16")



 Diameter×Width	 Load	 Material	 Item No.			 Bearing	 Overall Height	 Swivel radius
			Fixed	Swivel	Brake			
50mm x 20mm(41.5) (2" x 3/4")	70kgs (154lbs)	ZQPU(Dual Wheels)	1165-02-101-1(7)	1165-02-101-2(7)	—	Ball Bearing	78mm (3-1/8")	48mm (1-7/8")
	70kgs (154lbs)	QPU(Dual Anti-Static Wheels)	1165-02-101-1(7)	1165-02-101-2(7)	—			
50mm x 45mm (2" x 1-13/16")	70kgs (154lbs)	QPU	1165-02-87-1(7)	1165-02-87-2(7)	—			
62.5mm x 20mm(41.5) (2-1/2" x 3/4")	200kgs (440lbs)	ZQPU(Dual Wheels)	1165-25-101-1(7)	1165-25-101-2(7)	—	Ball Bearing	100mm (4")	58mm (2-1/4")
	150kgs (330lbs)	QPU(Dual Anti-Static Wheels)	1165-25-101-1(7)	1165-25-101-2(7)	—			
62.5mm x 45mm (2-1/2" x 1-13/16")	200kgs (440lbs)	QPU	1165-25-87-1(7)	1165-25-87-2(7)	—			
75mm x 20mm(41.5) (3" x 3/4")	200kgs (440lbs)	ZQPU(Dual Wheels)	1165-03-101-1(7)	1165-03-101-2(7)	—	Ball Bearing	105mm (4-1/8")	65mm (2-1/2")
	150kgs (330lbs)	QPU(Dual Anti-Static Wheels)	1165-03-101-1(7)	1165-03-101-2(7)	—			
75mm x 31mm (3" x 1-1/4")	90kgs (198lbs)	W Resolute	1165-03-48-1(7)	1165-03-48-2(7)	—			
75mm x 32mm (3" x 1-1/4")	150kgs (330lbs)	QPU on AL Core	1165-03-87-1(7)	1165-03-87-2(7)	—			
75mm x 45mm (3" x 1-13/16")	200kgs (440lbs)	QPU	1165-03-80-1(7)	1165-03-80-2(7)	—			
100mm x 20mm(41.5) (4" x 3/4")	200kgs (440lbs)	ZQPU(Dual Wheels)	1165-04-101-1(7)	1165-04-101-2(7)	—	Ball Bearing	135mm (5-3/8")	85mm (3-3/8")
	150kgs (330lbs)	QPU(Dual Anti-Static Wheels)	1165-04-101-1(7)	1165-04-101-2(7)	—			
100mm x 31mm (4" x 1-1/4")	110kgs (242lbs)	W Resolute	1165-04-48-1(7)	1165-04-48-2(7)	—			
100mm x 32mm (4" x 1-1/4")	180kgs (440lbs)	QPU on AL Core	1165-04-87-1(7)	1165-04-87-2(7)	—			
	200kgs (440lbs)	QPU	1165-04-80-1(7)	1165-04-80-2(7)	—			
100mm x 34 mm (4" x 1-3/8")	110kgs (242lbs)	Resilient Resolute Wheel(Blue tread)	1165-04-50-1(7)	1165-04-50-2(7)	—			
100mm x 40 mm (4" x 1-9/16")	200kgs (440lbs)	QPU on AL Core	1165-40-87-1(7)	1165-40-87-2(7)	—			
125mm x 31mm (5" x 1-1/4")	125kgs (275lbs)	W Resolute	1165-05-48-1(7)	1165-05-48-2(7)	—	Ball Bearing	160mm (6-1/4")	103mm (4")
125mm x 32mm (5" x 1-1/4")	200kgs (440lbs)	QPU on AL Core	1165-05-87-1(7)	1165-05-87-2(7)	—			
125mm x 36mm (5" x 1-1/2")	150kgs (330lbs)	Resilient Resolute Wheel(Blue tread)	1165-05-50-1(7)	1165-05-50-2(7)	—			
125mm x 40mm (5" x 1-9/16")	200kgs (440lbs)	QPU on AL Core	1165-40-87-1(7)	1165-40-87-2(7)	—			
	200kgs (440lbs)	QPU	1165-05-80-1(7)	1165-05-80-2(7)	—			

*The load is tested according to the ISO test standard