



116S Series

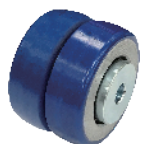
AMR/AGV-3 Double Precision Ball Bearing Caster (Medium Duty)

80 - 200 kg

- With two precision ball bearings embedded in the caster fork, this AMR/AGV-3 caster offer durability, dust-prevention and extended service life, compared to traditional stamping fabrication caster. AMR/AGV-3 caster is suitable for light and medium duty AMR/AGVs.



» Wheel Options



ZQPU(Dual Wheels)



QPU



QPU on AL Core



QPU(Dual Anti-Static Wheels)



Blue Resilient Resolute Rubber



W Resolute








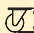

Ball Bearing

*Other Anti-Static Wheels Available, Please Contact The Factory

» TOP PLATE SIZE AND BOLT HOLE SPACING

Top Plate Size	Bolt Hole Spacing	Attaching Bolt Size
60 x 92 mm (2-3/8" x 3-5/8")	45 x 75 mm (1-3/4" x 3")	8 mm (5/16")
85 x 110 mm (3-11/32" x 4-11/23")	60 x 80 ~ 86 mm (2-3/8" x 3-5/32" ~ 3-3/8")	8 mm (5/16")
100 x 115 mm (4" x 4-1/2")	70 x 85 mm (2-5/8" ~ 3" x 3" ~ 3-5/8")	9.5 mm (3/8")



 Diameter×Width	 Load	 Material	 Item No.			 Bearing	 Overall Height	 Swivel radius
			Fixed	Swivel	Brake			
50mm x 20mm (41.5) (2" x 3/4")	70 kgs (154 lbs)	ZQPU(Dual Wheels)	-	1165-25-101-2(3)	-	Ball Bearing	87mm	Swivel 65 mm
	70 kgs (154 lbs)	QPU(Dual Anti-Static Wheels)	-	1165-25-101-2(3)	-			
50mm x 45mm (2" x 1-13/16")	70 kgs (154 lbs)	QPU	-	1165-25-53-2(3)	-			
62.5mm x 20mm (41.5) (2-1/2" x 3/4")	200 kgs (440 lbs)	ZQPU(Dual Wheels)	-	1165-25-101-2(3)	-	Ball Bearing	87mm	Swivel 65 mm
	150 kgs (330 lbs)	QPU(Dual Anti-Static Wheels)	-	1165-25-101-2(3)	-			
62.5mm x 45mm (2-1/2" x 1-13/16")	200 kgs (440 lbs)	QPU	-	1165-25-53-2(3)	-			
62.5mm x 20mm (41.5) (2-1/2" x 3/4")	200 kgs (440 lbs)	ZQPU(Dual Wheels)	-	1165-25-101-2(3)	-	Ball Bearing	94mm	Swivel 62 mm
	150 kgs (330 lbs)	QPU(Dual Anti-Static Wheels)	-	1165-25-101-2(3)	-			
62.5mm x 45mm (2-1/2" x 1-13/16")	200 kgs (440 lbs)	QPU	-	1165-25-53-2(3)	-			
75mm x 20mm (41.5) (3" x 3/4")	200 kgs (440 lbs)	ZQPU(Dual Wheels)	-	1165-03-101-2(3)	-	Ball Bearing	102.5mm	Swivel 65 mm
	150 kgs (330 lbs)	QPU(Dual Anti-Static Wheels)	-	1165-03-101-2(3)	-			
75mm x 45mm (3" x 1-13/16")	200 kgs (440 lbs)	QPU	-	1165-03-53-2(3)	-			
75mm x 32mm (3" x 1-1/4")	150 kgs (330 lbs)	QPU on AL Core	-	1165-03-87-2(3)	-			
75mm x 20mm (41.5) (3" x 3/4")	200 kgs (440 lbs)	ZQPU(Dual Wheels)	-	1165-03-101-2(3)	-	Ball Bearing	105.5mm	Swivel 72.5 mm
	150 kgs (330 lbs)	QPU(Dual Anti-Static Wheels)	-	1165-03-101-2(3)	-			
75mm x 45mm (3" x 1-13/16")	200 kgs (440 lbs)	QPU	-	1165-03-53-2(3)	-			
75mm x 32mm (3" x 1-1/4")	150 kgs (330 lbs)	QPU on AL Core	-	1165-03-87-2(3)	-			
100mm x 32mm (4" x 1-1/4")	200 kgs (440 lbs)	QPU on AL Core	-	1165-04-87-2(3)	-	Ball Bearing	130mm	Swivel 86 mm
	80 kgs (176 lbs)	W Resolute	-	1165-04-48-2(3)	-			
100mm x 34mm (4" x 1-1/2")	110 kgs (242 lbs)	Blue Resilient Resolute Rubber	-	1165-04-50-2(3)	-			
125mm x 32mm (5" x 1-1/4")	200 kgs (440 lbs)	QPU on AL Core	-	1165-05-87-2(3)	-	Ball Bearing	158mm	Swivel 99 mm
	100 kgs (220 lbs)	W Resolute	-	1165-05-48-2(3)	-			
125mm x 36mm (5" x 1-1/2")	130 kgs (287 lbs)	Blue Resilient Resolute Rubber	-	1165-05-50-2(3)	-			

*The load is tested according to the ISO test standard