



## 1165 Series

## Heavy Duty AMR/AGV-2 Caster

- Caster fork is made of high tensile steel with harden raceway to provide long lasting service life and extreme high load capacity while maintaining low profile and overall height. It is suitable for application like AMR/AGV and robotic industry products.

Load  
70 - 400 kg

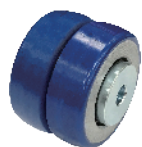


### » Features



Metal Thread Guard(optional)

### » Wheel Options



ZQPU(Dual Wheels)



QPU



QPU(Dual Anti-Static Wheels)



King Kong Wheel








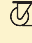

Ball Bearing

\*Other Anti-Static Wheels Available, Please Contact The Factory

### » TOP PLATE SIZE AND BOLT HOLE SPACING

| Suffix       | Top Plate Size                    | Bolt Hole Spacing                       | Attaching Bolt Size |
|--------------|-----------------------------------|---|---------------------|
| 1.5", 2"     | 51 x 65 mm (2" x 2-9/16")         | 36 x 51.5 mm (1-13/32" x 2-1/32")       | 6 mm (1/4")         |
|              | 51 x 84 mm (2" x 3-5/16")         | 37 x 70 mm (1-15/32" x 2-3/4")          | 6 mm (1/4")         |
|              | 60 x 60 mm (2-3/8" x 2-3/8")      | 42.5 x 42.5 mm (1-11/16" x 1-11/16")    | 6 mm (1/4")         |
|              | 60 x 90 mm (2-3/8" x 3-17/32")    | 44.5 x 73 mm (1-3/14" x 2-7/8")         | 8 mm (5/16")        |
| 2.5", 3", 4" | 85 x 110 mm (3-11/32" x 4-11/23") | 60 x 80~86 mm (2-3/8" x 3-5/32"~3-3/8") | 8 mm (5/16")        |



|  Diameter×Width |  Load | ** Guarantee<br>2000 KM/ 1250 Miles |  Material |  Item No. |                  |       |  Bearing |  Overall Height |  Swivel radius |
|--|--|-------------------------------------|--|--|------------------|-------|---|--|---|
|  |  |                                     |  | Fixed  | Swivel           | Brake |   |  |   |
| 34mm x 15mm (33)<br>(1-21/64" x 19/32")  | 70 kgs (154 lbs)   | 50 kgs (110 lbs)                    | ZQPU(Dual Wheels)  | 1165-15-101-1(2)   | 1165-15-101-2(2) | —     | Ball Bearing  | 52mm<br>(2-3/64")  | Swivel 40 mm  |
|  | 70 kgs (154 lbs)   | 50 kgs (110 lbs)                    | QPU(Dual Anti-Static Wheels)   | 1165-15-101-1(2)   | 1165-15-101-2(2) | —     |   |  |   |
| 50mm x 20mm (41.5)<br>(2" x 3/4")  | 70 kgs (154 lbs)   | 50 kgs (110 lbs)                    | ZQPU(Dual Wheels)  | 1165-02-101-1(2)   | 1165-02-101-2(2) | —     | Ball Bearing  | 79mm<br>(3-7/64")  | Swivel 46 mm  |
|  | 70 kgs (154 lbs)   | 50 kgs (110 lbs)                    | QPU(Dual Anti-Static Wheels)   | 1165-02-101-1(2)   | 1165-02-101-2(2) | —     |   |  |   |
| 50mm x 40mm<br>(2" x 1-9/16")  | 70 kgs (154 lbs)   | 50 kgs (110 lbs)                    | QPU  | 1165-02-53-1(2)  | 1165-02-53-2(2)  | —     |   |  |   |
| 50mm x 45mm<br>(2" x 1-13/16")   | 70 kgs (154 lbs)   | —                                   | King Kong Wheel  | 1165-02-100-1(2)   | 1165-02-100-2(2) | —     |   |  |   |
| 62.5mm x 20mm (41.5)<br>(2-1/2" x 3/4")  | 250 kgs (551 lbs)  | 84 kgs (185 lbs)                    | ZQPU(Dual Wheels)  | 1165-25-101-1(2)   | 1165-25-101-2(2) | —     | Ball Bearing  | 87mm<br>(3-27/64")   | Swivel 65 mm  |
|  | 200 kgs (440 lbs)  | 67 kgs (147 lbs)                    | QPU(Dual Anti-Static Wheels)   | 1165-25-101-1(2)   | 1165-25-101-2(2) | —     |   |  |   |
| 62.5mm x 45mm<br>(2-1/2" x 1-13/16")   | 250 kgs (551 lbs)  | —                                   | King Kong Wheel  | 1165-25-100-1(2)   | 1165-25-100-2(2) | —     |   |  |   |
|  | 200 kgs (440 lbs)  | 67 kgs (147 lbs)                    | QPU  | 1165-25-80-1(2)  | 1165-25-80-2(2)  | —     |   |  |   |
| 62.5mm x 20mm (41.5)<br>(2-1/2" x 3/4")  | 250 kgs (551 lbs)  | 84 kgs (185 lbs)                    | ZQPU(Dual Wheels)  | 1165-25-101-1(2)   | 1165-25-101-2(2) | —     | Ball Bearing  | 94mm<br>(3-45/64")   | Swivel 62 mm  |
|  | 200 kgs (440 lbs)  | 67 kgs (147 lbs)                    | QPU(Dual Anti-Static Wheels)   | 1165-25-101-1(2)   | 1165-25-101-2(2) | —     |   |  |   |
| 62.5mm x 45mm<br>(2-1/2" x 1-13/16")   | 250 kgs (551 lbs)  | —                                   | King Kong Wheel  | 1165-25-71-1(2)  | 1165-25-71-2(2)  | —     |   |  |   |
|  | 200 kgs (440 lbs)  | 67 kgs (147 lbs)                    | QPU  | 1165-25-53-1(2)  | 1165-25-53-2(2)  | —     |   |  |   |
| 75mm x 20mm (41.5)<br>(3" x 3/4")  | 300 kgs (661 lbs)  | 100 kgs (220 lbs)                   | ZQPU(Dual Wheels)  | 1165-03-101-1(2)   | 1165-03-101-2(2) | —     | Ball Bearing  | 105.5mm<br>(4-5/32")   | Swivel 72.5 mm  |
|  | 250 kgs (551 lbs)  | 84 kgs (185 lbs)                    | QPU(Dual Anti-Static Wheels)   | 1165-03-101-1(2)   | 1165-03-101-2(2) | —     |   |  |   |
| 75mm x 45mm<br>(3" x 1-13/16")   | 300 kgs (661 lbs)  | —                                   | King Kong Wheel  | 1165-03-100-1(2)   | 1165-03-100-2(2) | —     |   |  |   |
|  | 250 kgs (551 lbs)  | 84 kgs (185 lbs)                    | QPU  | 1165-03-80-1(2)  | 1165-03-80-2(2)  | —     |   |  |   |
| 75mm x 20mm (41.5)<br>(3" x 3/4")  | 300 kgs (661 lbs)  | 100 kgs (220 lbs)                   | ZQPU(Dual Wheels)  | 1165-03-101-1(2)   | 1165-03-101-2(2) | —     | Ball Bearing  | 115.5mm<br>(4-17/32")  | Swivel 72.5 mm  |
|  | 250 kgs (551 lbs)  | 84 kgs (185 lbs)                    | QPU(Dual Anti-Static Wheels)   | 1165-03-101-1(2)   | 1165-03-101-2(2) | —     |   |  |   |
| 75mm x 45mm<br>(3" x 1-13/16")   | 300 kgs (661 lbs)  | —                                   | King Kong Wheel  | 1165-03-71-1(2)  | 1165-03-71-2(2)  | —     |   |  |   |
|  | 300 kgs (661 lbs)  | 100 kgs (661 lbs)                   | QPU  | 1165-03-53-1(2)  | 1165-03-53-2(2)  | —     |   |  |   |
| 100mm x 22mm (41.5)<br>(4" x 7/8")   | 400 kgs (881 lbs)  | 134 kgs (295 lbs)                   | ZQPU(Dual Wheels)  | 1165-04-101-1(2)   | 1165-04-101-2(2) | —     | Ball Bearing  | 125mm<br>(4-59/64")  | Swivel 90 mm  |
|  | 350 kgs (771 lbs)  | 117 kgs (157 lbs)                   | QPU(Dual Anti-Static Wheels)   | 1165-04-101-1(2)   | 1165-04-101-2(2) | —     |   |  |   |

\*The load is tested according to the ISO test standard

\*\* Guarantee 2000 km life span on the selected AGV caster models under normal field application.

Dersheng reserves the right of the final interpretation on the caster test method and 2000 km guarantee.