



# 1159 Series Air Cargo Caster



## Features:

- Quiet Operation.
- Steel dust cap around swivel section of the fork to prevent contamination, resulting in longer service life.
- Shock resistant premium nylon wheel.
- Easy installation and replacement.

## Bearing type:

**Precision Ball Bearing :** Sealed precision ball bearing in both wheels and fork swivel section.

**Wheel Material :** Nylon

**Finish :** Yellow dichromate. / Zinc plated finish.

**Temperature Range :** -35°C ~ +80°C

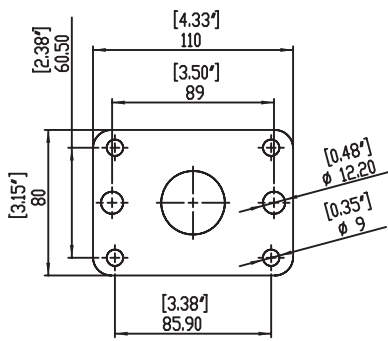
**Capacity :** 550 lbs

## Applications:

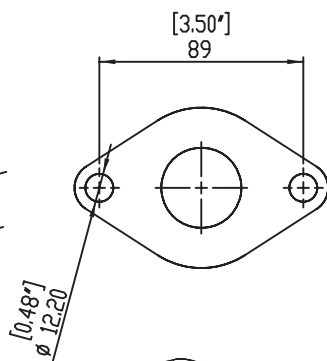
- Cargo Conveyor Equipment.
- Cargo handling
- Textile industry
- Conveyor applications

## Top Plate Option

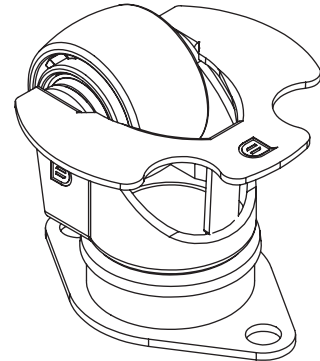
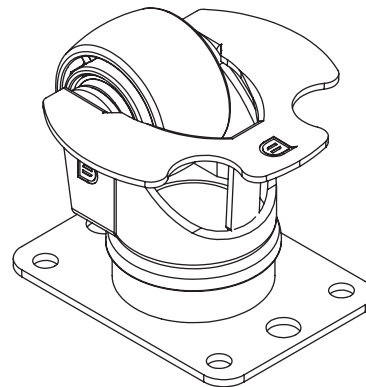
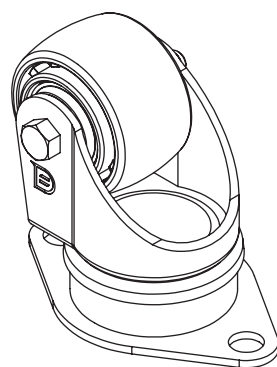
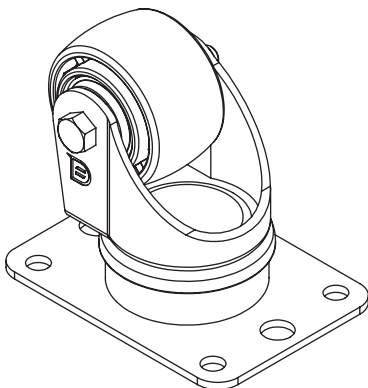
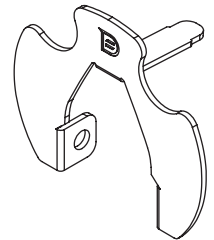
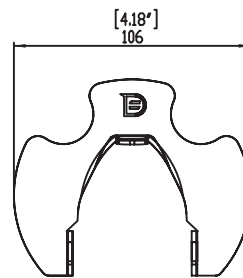
### Rectangular



### Diamond



## Toe Guard



| Item No     | Wheel Diameter | Tread Width  | Overall Height | Load Cap (Lbs)  | Top Plate   | Toe Guard      | Bearing Type |
|-------------|----------------|--------------|----------------|-----------------|-------------|----------------|--------------|
| 11590200202 | 2-1/4"(58mm)   | 1-3/4"(34mm) | 3-3/4"(96mm)   | 250kgs(550 lbs) | Rectangular | with toe-guard | Ball Bearing |
| 11590200204 | 2-1/4"(58mm)   | 1-3/4"(34mm) | 3-3/4"(96mm)   | 250kgs(550 lbs) | Rectangular | ---            |              |
| 11590200201 | 2-1/4"(58mm)   | 1-3/4"(34mm) | 3-3/4"(96mm)   | 250kgs(550 lbs) | Diamond     | with toe-guard |              |
| 11590200203 | 2-1/4"(58mm)   | 1-3/4"(34mm) | 3-3/4"(96mm)   | 250kgs(550 lbs) | Diamond     | ---            |              |
| 11590280204 | 2-3/4"(70mm)   | 1-3/4"(34mm) | 4"(102mm)      | 250kgs(550 lbs) | Rectangular | with toe-guard |              |
| 11590280203 | 2-3/4"(70mm)   | 1-3/4"(34mm) | 4"(102mm)      | 250kgs(550 lbs) | Rectangular | ---            |              |
| 11590280202 | 2-3/4"(70mm)   | 1-3/4"(34mm) | 4"(102mm)      | 250kgs(550 lbs) | Diamond     | with toe-guard |              |
| 11590280201 | 2-3/4"(70mm)   | 1-3/4"(34mm) | 4"(102mm)      | 250kgs(550 lbs) | Diamond     | ---            |              |