



1109-HD Series 重型

美国机械轮系列

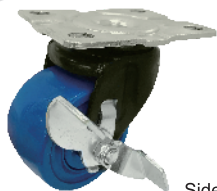
Heavy Duty/Low Profile Business Machine Caster

- 脚架采用高钢性板材，配合热处理珠道来达到极高的荷重与长时间的使用寿命，同一时间又能够确保低重心的要求，适用于商业机械设备与计算机服务器物料架与AGV (无人车)使用。其中的大底板附支撑脚的设计，可增大荷重，其支撑脚可调整高度并可随意稳固地停放台车且脚片表面电着处理更提供高级外观与更好的防锈能力。
- Caster fork is made of high tensile pressed steel with harden raceway to provide long lasting service life and extreme high load capacity while maintain low profile and over all height. It is suitable for application like business machine, server rack and AGV. Caster with floor lock is designed to further increase the load capability and immobility function. Height is also adjustable for model with floor lock. Also the E-coat finish on the fork provides better finish and offers better protection against the rust.

载重 Load
250-500 kg



» 特色区 Features



侧刹
Side Lock Brake

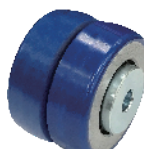
» 轮子选项 Wheel Options



尼龙轮
Nylon



金钢轮
King Kong Wheel



ZQPU轮
QPU(Dual Wheels)



QPU轮
QPU



中管
Plain Bearing






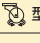

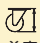

滚珠轴承
Ball Bearing

» 底板规格 TOP PLATE SIZE AND BOLT HOLE SPACING

脚轮尺寸 Caster Size	底板尺寸 Top Plate Size	底板孔距 Bolt Hole Spacing	安装尼帽尺寸 Attaching Bolt Size
2-1/2"x 1-15/16" 美国轮 2-1/2"x 1-15/16"	65 x 95 mm (2-3/4"x 3-3/4")	45 x 75 mm (1-3/4"x 3")	8 mm (5/16")
3" 美国轮 3"x1-15/16"	86 x 110mm (3-3/8"x 4-5/16")	60 x 83mm (2-3/8"x 3-1/4")	10 mm (3/8")

轮径x轮宽 DiameterxWidth	载重 Load	材质 Material	型号 Item No.			轴承 Bearing	总高 Overall Height	回旋半径 Swivel radius
			固定 Fixed	活动 Swivel	刹车 Brake			
50 x 45mm (2" x 1-3/4")	350 kgs (770 lbs)	QPU轮 QPU	1109-02-80-1(H)	1109-02-80-2(H)	--	滚珠 Ball Bearing	75mm (3")	活动 50mm Swivel 50mm
	350 kgs (770 lbs)	ZQPU轮 QPU (Dual Wheels)	1109-02-101-1(H)	1109-02-101-2(H)	--	滚珠 Ball Bearing		
	250 kgs (550 lbs)	金钢轮 King Kong Wheel	1109-02-100-1(H)	1109-02-100-2(H)	--	滚珠 Ball Bearing		
	200 kgs (440 lbs)	尼龙轮 Nylon	1109-02-07-1(H)	1109-02-07-2(H)	--	中管 Plain Bearing		



 轮径x轮宽 DiameterxWidth	 载重 Load	 材质 Material	 型号 Item No.			 轴承 Bearing	 总高 Overall Height	 回旋半径 Swivel radius
			固定 Fixed	活动 Swivel	刹车 Brake			
62.5 x 45mm (2-1/2" x 1-3/4")	400 kgs (880 lbs)	QPU轮 QPU	1109-25-80-1(H)	1109-25-80-2(H)	1109-25-80-4(H)	滚珠 Ball Bearing	90.5mm (3-9/16")	活动 59.5mm 侧刹 77mm Swivel 59.5mm Swivel W/Side Brake 77mm
	400 kgs (880 lbs)	ZQPU轮 QPU (Dual Wheels)	1109-25-101-1(H)	1109-25-101-2(H)	1109-25-101-4(H)	滚珠 Ball Bearing		
	450 kgs (990 lbs)	金钢轮 King Kong Wheel	1109-25-100-1(H)	1109-25-100-2(H)	1109-25-100-4(H)	滚珠 Ball Bearing 中管 Plain Bearing		
	250 kgs (550 lbs)	尼龙轮 Nylon	1109-25-07-1(H)	1109-25-07-2(H)	1109-25-07-4(H)	滚珠 Ball Bearing		
75 x 45mm (3" x 1-3/4")	450 kgs (990 lbs)	QPU轮 QPU	1109-03-80-1(H)	1109-03-80-2(H)	1109-03-80-4(H)	滚珠 Ball Bearing	105.5mm (4-1/8")	活动 70mm 侧刹 85.5mm Swivel 70mm Swivel W/Side Brake 85.5mm
	450 kgs (990 lbs)	ZQPU轮 QPU (Dual Wheels)	1109-03-101-1(H)	1109-03-101-2(H)	1109-03-101-4(H)	滚珠 Ball Bearing		
	500 kgs (1100 lbs)	金钢轮 King Kong Wheel	1109-03-100-1(H)	1109-03-100-2(H)	1109-03-100-4(H)	滚珠 Ball Bearing 中管 Plain Bearing		
	300 kgs (660 lbs)	尼龙轮 Nylon	1109-03-07-1(H)	1109-03-07-2(H)	1109-03-07-4(H)	滚珠 Ball Bearing 中管 Plain Bearing		