

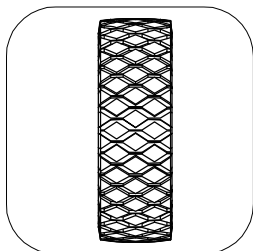


1204 Series 空心胎/實心胎割草機輪 Semi-Pneumatic & Solid Rubber Wheel

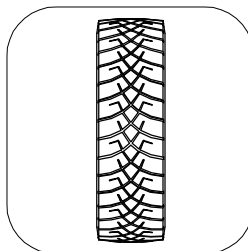
- 適用於割草機, 木工機械, 高壓清洗機, 發電機, 搬運車與氧氣車等
有多樣的胎紋供選擇, 請連絡工廠。
輪框材質有鐵框(可做烤漆或電鍍處理)及塑框可供選擇
各種OEM尺寸及設計可以依據產品設計需求生產
- Good for lawn mowers, wooden machinery, generators, two-wheeled carts, etc.
Various Tread patterns available, please consult the factory.
Rims can be plastic or steel (painted or zinc-plated)
OEM requests and tailored-made wheels in all sizes are welcome.



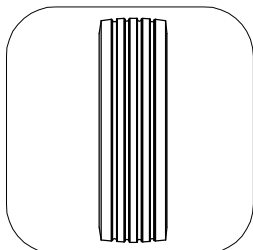
特色區 Features



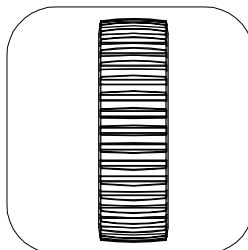
1) 鑽紋
Diamond Tread Profile



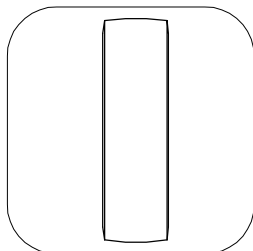
2) X紋
X Tread Profile



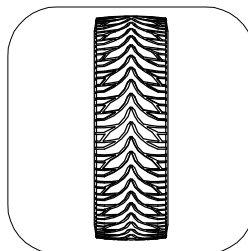
3) 直紋
Rib Tread Profile



4) 齒紋
Gear Tread Profile



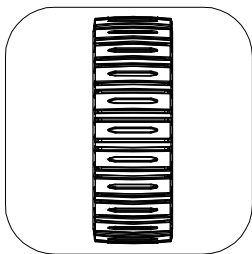
5) 光面
Smooth Tread Profile



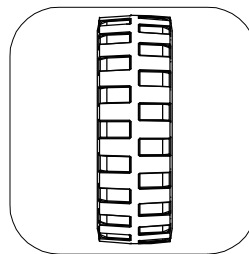
6) V紋
V Tread Profile



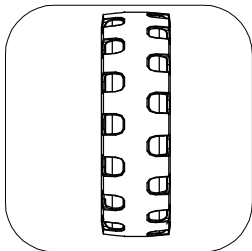
特色區 Features



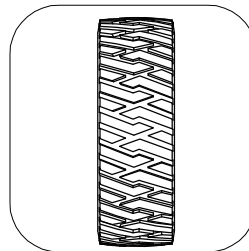
7) G-2紋
G-2 Tread Profile



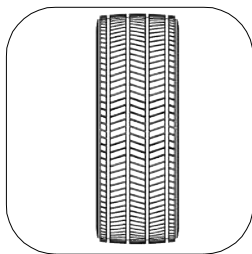
8) 方塊紋
Stud Tread Profile



9) G-3紋
G-3 Tread Profile



10) L紋
L Tread Profile



11) 橫紋
Lateral Tread Profile

實心胎橡膠輪（鐵框-正心） Solid Rubber Wheel with Steel Rim (Centered Hub)

輪徑 Wheel Diameter	輪寬 Wheel Width	中寬(含軸承) Hub Length (with bearing)	軸承 Ball Bearing							胎紋 Tread Profile	厚膠/薄膠 Tread Thickness	鐵框顏色 Hub Color						荷重 Load
			精密滾珠軸承 Precision ball bearing				A珠 Flanged ball bearing					黑 Black	白 White	紅 Red	銀灰 Silver	鍍鋅 Zinc Plated	黃 Yellow	
			12mm	6002 (15mm)	6203 (17mm)	6904 (20mm)	1/2" (12.7mm)	5/8" (15.88mm)	3/4" (19.05mm)									
6"	1-1/2" (37mm)	1-17/32" (39mm)					√			直紋 Rib	厚膠 Thick Tread		√	√				60kg (130 lbs)
		1-27/32" (47mm)					√	√	√	直紋 Rib			√	√				
7"	1-1/2" (35mm)	2" (51mm)					√	√	√	直紋 Rib	厚膠 Thick Tread		√	√				70kg (155 lbs)
8"	1-3/4" (42mm)	2" (51mm)					√	√	√	直紋 Rib	厚膠 Thick Tread		√	√				70kg (155 lbs)
	1-3/4" (42 mm)	2-1/4" (57mm)					√			直紋 Rib			√	√				
8"	2-1/2" (62mm)	2-11/64" (55.2mm)						√	√	直紋 Rib	厚膠 Thick Tread			√		√		70kg (155 lbs)
10"	1-3/4" (41mm)	2-3/16" (55.5mm)					√	√	√	直紋 Rib	厚膠 Thick Tread		√	√	√			70kg (155 lbs)
10"	2-1/2" (57mm)	2-3/4" (70mm)						√	√	直紋 Rib	厚膠 Thick Tread			√				110kg (240 lbs)
10"	2-3/4" (65mm)	2-3/4" (70mm)						√	√	直紋 Rib	厚膠 Thick Tread				√	√		115kg (255 lbs)
12"	1-3/4" (43mm)	2-21/64" (59mm)					√			直紋 Rib	厚膠 Thick Tread			√				70kg (155 lbs)



輪徑 Wheel Diameter	輪寬 Wheel Width	中寬(含軸承) Hub Length (with bearing)	軸承 Ball Bearing							胎紋 Tread Profile	厚膠/薄膠 Tread Thickness	鐵框顏色 Hub Color						荷重 Load
			精密滾珠軸承 Precision ball bearing				A珠 Flanged ball bearing					黑 Black	白 White	紅 Red	銀灰 Silver	鍍鋅 Zinc Plated	黃 Yellow	
			12mm	6002 (15mm)	6203 (17mm)	6904 (20mm)	1/2" (12.7mm)	5/8" (15.88mm)	3/4" (19.05mm)									
6"	1-1/2" (36mm)	1-29/64" (37mm)					V	V	V	直紋 Rib	厚膠 Thick Tread		V	V				60kg (130 lbs)
7"	1-1/2" (35mm)	1-31/64" (37.5mm)					V	V	V	直紋 Rib	厚膠 Thick Tread		V	V				70kg (155 lbs)
8"	1-3/4" (42 mm)	1-1/2" (38mm)		V						直紋 Rib	厚膠 Thick Tread		V					70kg (155 lbs)
	1-3/4" (42mm)	1-31/64" (37.5mm)					V	V	V	直紋 Rib			V	V				
10"	1-3/4" (41mm)	1-39/64" (41mm)					V	V	V	直紋 Rib	厚膠 Thick Tread		V	V				70kg (155 lbs)
10"	2-1/2" (57mm)	2-9/64" (54mm)						V	V	直紋 Rib	厚膠 Thick Tread			V				110kg (240 lbs)
10"	2-3/4" (65mm)	2-9/64" (54mm)							V	直紋 Rib	厚膠 Thick Tread				V	V		115kg (255 lbs)

[illegible]



實心胎橡膠輪 (塑框-偏心) Solid Rubber Wheel with Plastic Rim (Offset Hub)

[illegible]



空心胎橡膠輪（鐵框-正心） Semi-Pneumatic Rubber Wheel with Steel Rim (Centered Hub)

輪徑 Wheel Diameter	輪寬 Wheel Width	中寬(含軸承) Hub Length (with bearing)	軸承 Ball Bearing							胎紋 Tread Profile	厚膠/薄膠 Tread Thickness	鐵框顏色 Hub Color						荷重 Load
			精密滾珠軸承 Precision ball bearing				A珠 Flanged ball bearing					黑 Black	白 White	紅 Red	銀灰 Silver	鍍鋅 Zinc Plated	黃 Yellow	
			12mm	6002 (15mm)	6203 (17mm)	6904 (20mm)	1/2" (12.7mm)	5/8" (15.88mm)	3/4" (19.05mm)									
6"	1-1/2" (37mm)	1-17/32" (39mm)						V	V	直紋 Rib	厚膠 Thick Tread		V	V				25kg (55 lbs)
6"	1-1/2" (37mm)	1-17/32" (39mm)						V	V	鑽紋 Diamond	厚膠 Thick Tread		V	V				25kg (55 lbs)
6"	1-1/2" (37mm)	1-27/32" (47mm)						V	V	直紋 Rib	厚膠 Thick Tread		V	V				25kg (55 lbs)
6"	1-1/2" (37mm)	1-27/32" (47mm)						V	V	鑽紋 Diamond	厚膠 Thick Tread		V	V				25kg (55 lbs)
6"	1-4/5" (45mm)	2-13/64" (56mm)					V			鑽紋 Diamond	厚膠 Thick Tread		V	V				30kg (65 lbs)
7"	1-1/2" (36mm)	1-31/64" (37.5mm)					V	V	V	直紋 Rib	厚膠 Thick Tread		V	V				30kg (65 lbs)
7"	1-1/2" (36mm)	1-31/64" (37.5mm)					V	V	V	鑽紋 Diamond	厚膠 Thick Tread		V	V				30kg (65 lbs)
7"	1-1/2" (36mm)	2" (51mm)					V	V	V	直紋 Rib	厚膠 Thick Tread		V	V				30kg (65 lbs)
7"	1-1/2" (36mm)	2" (51mm)					V	V	V	鑽紋 Diamond	厚膠 Thick Tread		V	V				30kg (65 lbs)
7"	1-3/4" (44.5mm)	1-31/64" (37.5mm)					V	V	V	鑽紋 Diamond	厚膠 Thick Tread		V	V				30kg (65 lbs)
7"	1-3/4" (44.5mm)	2" (51mm)					V	V	V	鑽紋 Diamond	厚膠 Thick Tread		V	V				30kg (65 lbs)
8"	1-3/4" (42mm)	1-31/64" (37.5mm)					V	V	V	鑽紋 Diamond	厚膠 Thick Tread		V					35kg (80 lbs)
		2" (51mm)					V	V	V	鑽紋 Diamond			V	V				35kg (80 lbs)
8"	1-3/4" (43mm)	1-31/64" (37.5mm)					V	V	V	直紋 Rib	厚膠 Thick Tread		V					35kg (80 lbs)
		2" (51mm)					V	V	V	直紋 Rib			V	V				35kg (80 lbs)
10"	1-3/4" (41mm)	1-39/64" (41mm)					V	V	V	直紋 Rib	厚膠 Thick Tread		V	V				45kg (100 lbs)
10"	1-3/4" (41mm)	1-39/64" (41mm)					V	V	V	鑽紋 Diamond	厚膠 Thick Tread		V	V				45kg (100 lbs)
10"	2-1/2" (57mm)	1-55/64" (47.3mm)						V	V	直紋 Rib	厚膠 Thick Tread			V				70kg (155 lbs)
10"	2-3/4" (62mm)	2-9/64" (54mm)						V	V	直紋 Rib	厚膠 Thick Tread					V	V	70kg (155 lbs)
10"	3-25/64" (85mm)	2-19/32" (65mm)			V	V		V	V	橫紋 Lateral	厚膠 Thick Tread			V	V	V	V	90kg (200 lbs)
12"	1-3/4" (43mm)	1-39/64" (56mm)					V			直紋 Rib	厚膠 Thick Tread			V				35kg (80 lbs)



空心胎橡膠輪（鐵框-偏心） Semi-Pneumatic Rubber Wheel with Steel Rim (Offset Hub)

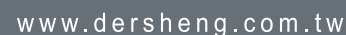
輪徑 Wheel Diameter	輪寬 Wheel Width	中寬(含軸承) Hub Length (with bearing)	軸承 Ball Bearing							胎紋 Tread Profile	厚膠/薄膠 Tread Thickness	鐵框顏色 Hub Color						荷重 Load
			精密滾珠軸承 Precision ball bearing				A珠 Flanged ball bearing					黑 Black	白 White	紅 Red	銀灰 Silver	鍍鋅 Zinc Plated	黃 Yellow	
			12mm	6002 (15mm)	6203 (17mm)	6904 (20mm)	1/2" (12.7mm)	5/8" (15.88mm)	3/4" (19.05mm)									
6"	1-1/2" (37mm)	1-29/64" (37mm)					V	V	V	直紋 Rib	厚膠 Thick Tread		V	V				25kg (55 lbs)
6"	1-1/2" (37mm)	1-29/64" (37mm)					V	V	V	鑽紋 Diamond	厚膠 Thick Tread		V	V				25kg (55 lbs)
7"	1-1/2" (36mm)	1-31/64" (37.5mm)					V	V	V	直紋 Rib	厚膠 Thick Tread		V	V				30kg (65 lbs)
7"	1-1/2" (36mm)	1-31/64" (37.5mm)					V	V	V	鑽紋 Diamond	厚膠 Thick Tread		V	V				30kg (65 lbs)
7"	1-3/4" (44.5mm)	1-31/64" (37.5mm)					V	V	V	鑽紋 Diamond	厚膠 Thick Tread		V	V				30kg (65 lbs)
8"	1-3/4" (42mm)	1-31/64" (37.5mm)					V	V	V	鑽紋 Diamond	厚膠 Thick Tread		V	V				35kg (80 lbs)
		1-1/2" (38mm)		V						鑽紋 Diamond			V					35kg (80 lbs)
8"	1-3/4" (43mm)	1-31/64" (37.5mm)					V	V	V	直紋 Rib	厚膠 Thick Tread		V	V				35kg (80 lbs)
		1-1/2" (38mm)		V						直紋 Rib			V					35kg (80 lbs)
10"	1-3/4" (41mm)	1-39/64" (41mm)					V	V	V	直紋 Rib	厚膠 Thick Tread		V	V				45kg (100 lbs)
10"	2-1/2" (57mm)	1-55/64" (47.3mm)						V	V	直紋 Rib	厚膠 Thick Tread			V				70kg (155 lbs)
10"	3-25/64" (85mm)	2-19/32" (65mm)			V	V				橫紋 Lateral	厚膠 Thick Tread			V	V	V	V	80kg (175 lbs)

[illegible]



空心胎橡膠輪（塑框-偏心） Semi-Pneumatic Rubber Wheel with Plastic Rim (Offset Hub)

輪徑 Wheel Diameter	輪寬 Wheel Width	中寬 (含軸承) Hub Length (with bearing)	中管 Plain Bearing															雙軸承 Double Ball Bearing				胎紋 Tread Profile	厚膠/薄膠 Tread Thickness	塑框顏色 Hub Color												塑框形狀								荷重 Load
			10.2 mm	10.5 mm	12.7 mm	12.8 mm	12.85 mm	12.9 mm	13 mm	14.5 mm	14.8 mm	15.1 mm	16 mm	16.2 mm	17.5 mm	41.8 mm	6004 (20 mm)	6201 (12.75 mm)	6202 (15.88 mm)	6202 (20 mm)	深灰 Dark Gray			淺灰 Light Gray	冷灰 Cool Gray	灰 Gray	黃 Yellow	黑 Black	白 White	紅 Red	綠 Green	藍 Blue	五風	三爪	五爪	三叉	五叉	十叉	十二 叉	六風	其他			
6"	1-1/2" (33mm)	1-13/64" (30.25 mm)						V												方塊紋 Stud	厚膠 Thick Tread	V	V										V							25kg (55 lbs)				
6"	1-1/2" (37mm)	1-3/8" (34.5 mm)				V														鑽紋 Diamond	厚膠 Thick Tread						V											V	25kg (55 lbs)					
6"	1-1/2" (37.5 mm)	1-39/64" (40.5 mm)								V										G-2紋 G-2	厚膠 Thick Tread					V					V								25kg (55 lbs)					
6"	1-1/2" (38mm)	1-3/8" (34.5 mm)				V														光面 Smooth	厚膠 Thick Tread						V			V									25kg (55 lbs)					
6.17"	1-1/2" (37.3 mm)	1-7/8" (47.2 mm)		V																齒紋 Gear	厚膠 Thick Tread				V										V				25kg (55 lbs)					
7"	1-1/2" (38mm)	1-19/64" (32.5 mm)															V			鑽紋 Diamond	薄膠 Regular Tread					V									V				30kg (65 lbs)					
7"	1-1/2" (38mm)	1-25/64" (34.9 mm)				V														鑽紋 Diamond	薄膠 Regular Tread	V												V					30kg (65 lbs)					
7"	1-1/2" (38mm)	1-25/64" (34.9 mm)				V														光面 Smooth	薄膠 Regular Tread					V								V					30kg (65 lbs)					
7"	1-1/2" (38mm)	1-7/16" (36mm)															V			鑽紋 Diamond	薄膠 Regular Tread			V			V									V			30kg (65 lbs)					
7"	1-1/2" (38mm)	1-7/16" (36mm)			V															X紋 X Profile	薄膠 Regular Tread					V		V										V	30kg (65 lbs)					
7"	1-1/2" (38mm)	1-41/64" (39mm)							V											鑽紋 Diamond	薄膠 Regular Tread					V									V				30kg (65 lbs)					
7"	1-1/2" (38mm)	1-41/64" (41mm)										V								鑽紋 Diamond	薄膠 Regular Tread						V				V								30kg (65 lbs)					
8"	1-3/4" (41.5 mm)	1-25/64" (34.9 mm)				V														粗齒紋 Gear	厚膠 Thick Tread						V								V				35kg (80 lbs)					
8"	1-3/4" (41.5 mm)	1-41/64" (39mm)							V											粗齒紋 Gear	厚膠 Thick Tread						V								V				35kg (80 lbs)					
8"	1-3/4" (42mm)	1-41/64" (39mm)							V											直紋 Rib	厚膠 Thick Tread						V								V				35kg (80 lbs)					
8"	1-3/4" (43mm)	1-3/32" (27mm)						V									V			方塊紋 Stud	厚膠 Thick Tread	V				V							V						35kg (80 lbs)					
8"	1-3/4" (43mm)	1-5/16" (33mm)															V			鑽紋 Diamond	厚膠 Thick Tread				V			V								V			35kg (80 lbs)					
8"	1-3/4" (43mm)	1-25/64" (34.9 mm)				V														鑽紋 Diamond	厚膠 Thick Tread						V								V				35kg (80 lbs)					
8"	1-3/4" (43mm)	1-25/64" (34.9 mm)				V														齒紋 Gear	厚膠 Thick Tread						V								V				35kg (80 lbs)					
8"	1-3/4" (43mm)	1-27/64" (36mm)															V			直紋 Rib	薄膠 Regular Tread		V				V								V				35kg (80 lbs)					
8"	1-3/4" (43mm)	1-15/32" (37mm)															V			鑽紋 Diamond	厚膠 Thick Tread									V									35kg (80 lbs)					
8"	1-3/4" (43mm)	1-33/64" (38mm)				V														鑽紋 Diamond	厚膠 Thick Tread					V				V						V			35kg (80 lbs)					
8"	1-3/4" (43mm)	1-33/64" (38mm)				V														鑽紋 Diamond	厚膠 Thick Tread						V								V				35kg (80 lbs)					
8"	1-3/4" (43mm)	1-41/64" (39mm)															V			鑽紋 Diamond	厚膠 Thick Tread					V									V				35kg (80 lbs)					
8"	1-3/4" (43mm)	1-41/64" (39mm)							V											鑽紋 Diamond	厚膠 Thick Tread					V		V	V						V				35kg (80 lbs)					
8"	1-3/4" (43mm)	1-41/64" (40.9 mm)				V														鑽紋 Diamond	厚膠 Thick Tread						V								V				35kg (80 lbs)					
8"	1-3/4" (44mm)	1-25/64" (34.9 mm)				V														光面 Smooth	厚膠 Thick Tread						V								V				35kg (80 lbs)					
8"	1-3/4" (44mm)	1-27/64" (36mm)															V			鑽紋 Diamond	薄膠 Regular Tread				V			V								V			35kg (80 lbs)					

[illegible]