



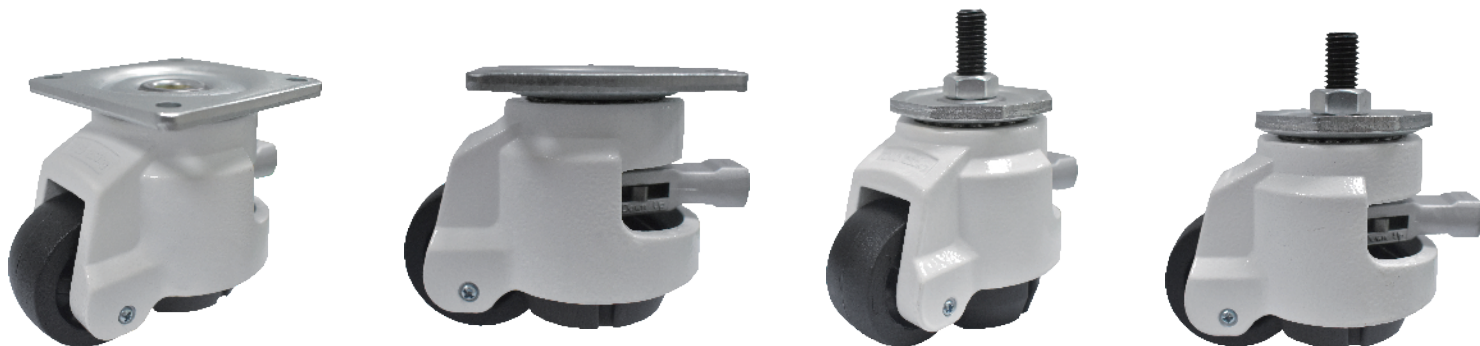
1169-1 Series

水平調節輪系列(聯動把手款)

Height Adjustment Caster with adjustable handle

- 可以藉由聯動把手的轉動，輕易調整角輪高度，使設備達到水平狀態。
水平調節輪系列腳輪適用於電氣自動化設備類、半導體設備類、醫療機械類、其他機臺、機櫃設備類，適用於3T以下的設備支撐要求，具有重型支撐、水平調節、可移動、環保清潔等專業特點，可根據客戶需求提供客製化服務，詳情請洽工廠。
- By turning the handle, one can easily move up or down the caster to reach the desired horizontal levelness, on the equipment. The height adjustment caster with adjustable handle series casters are suitable for electrical automation equipment, semiconductor equipment, medical machinery, other machine tools, and cabinet equipment. They are suitable for equipment support requirements below 3 tons, with professional features such as heavy-duty support, horizontal adjustment, mobility, and environmentally friendly cleaning. Customization services are available according to customer needs. For details, please contact the factory.

載重 Load
250-750 kg



» 輪子選項 Wheel Options



PA+纖輪
PA+ Glass Fiber wheel

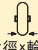



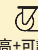

» 底板規格 TOP PLATE SIZE AND BOLT HOLE SPACING

規格 Size	底板尺寸 Top Plate Size	底板孔距 Bolt Hole Spacing	安裝尼帽尺寸 Attaching Bolt Size
60F	73 x 73 mm (2-7/8" x 2-7/8")	58 x 58 mm (2-1/4" x 2-1/4")	M6
80F	90 x 90mm (3-1/2" x 3-1/2")	70 x 70 mm (2-3/4" x 2-3/4")	M8
100F	97 x 97mm (3-7/8" x 3-7/8")	70 x 70 mm (2-3/4" x 2-3/4")	M10

» 絲扣規格 THREADED STEM SPECIFICATION

規格 Size	絲扣牙徑 X 長度 - 牙距 Threaded Size	規格 Size	絲扣牙徑 X 長度 - 牙距 Threaded Size
60S	M12x40-P1.75	80S、100S	M14x40-P2



規格 Size	 輪徑×輪寬 Diameter×Width	 載重 Load	 材質 Material	型號 Item No.			 軸承 Bearing	 總高+可調高度 Overall Height	 迴旋半徑 Swivel radius
				固定 Fixed	活動 Swivel	剎車 Brake			
60	50mm x 25mm (2" x 1")	250kgs (551 lbs)	PA+纖維輪 PA+ Glass Fiber wheel	—	1169-0200-07-2	—	無 N/A	86+10mm (3-3/8")	63mm
80	60mm x 32mm (2-1/2" x 1-1/4")	500kgs (1102 lbs)	PA+纖維輪 PA+ Glass Fiber wheel	—	1169-0250-07-2	—		106+10mm (4-1/8")	75mm
100	75mm x 32mm (3" x 1-1/4")	750kgs (1653lbs)	PA+纖維輪 PA+ Glass Fiber wheel	—	1169-0300-07-2	—		120+12mm (4-3/4")	90.5mm

使用標準

*4pcs腳輪支撐承重標準為單個腳輪承重x2

**腳輪行走狀態應在平整地面、行走速度≤1km/h，短距離行走。

Using standard:

*The load-bearing standard for 4pcs caster support is twice the load-bearing capacity of a single caster.

** Dynamic loading should be on a flat surface, walking speed ≤ 1km/h, short-distance walking.