



1165 Series

AMR/AGV-4 單精密軸承活動腳輪系列(中型)

AMR/AGV-4 Single Precision Ball Bearing Caster (Medium Duty)

- 採用精密軸承，來應對 AMR/AGV 需求的複雜環境：耐久，長距離運行，防塵等特點；適用於中等載荷 AMR/AGV 用。
- With Single precision ball bearing embedded in the caster fork, this AMR/AGV-4 caster offer durability, dust-prevention and extended service life, compared to traditional stamping fabrication caster. AMR/AGV-4 caster is suitable for light and medium duty AMR/AGVs.

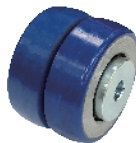
載重 Load
35 - 200 kg



輪子選項 Wheel Options



全效雙輪
Resolute(Dual Wheels)



ZQPU雙輪
ZQPU(Dual Wheels)



全效輪(小弧)
Resolute Rubber Wheel
(Crown Surface)



鋁芯ALPU
QPU on AL Core



鋁芯ALPU
HPU on AL Core



藍色彈力全效輪
Blue Resilient Resolute Rubber



ZQPU輪(抗靜電)
QPU(Dual Anti-Static Wheels)



導電輪(小弧)
E-Conductive
(Crown Surface)



W 全效輪(平面)
W Resolute
(Flat Surface)



滾珠軸承
Ball Bearing

*有其它抗靜電輪可供選擇，如有需求請聯絡工廠

*Other Anti-Static Wheels Available, Please Contact The Factory

底板規格 TOP PLATE SIZE AND BOLT HOLE SPACING

編號 Suffix	底板尺寸 Top Plate Size	底板孔距 Bolt Hole Spacing	安裝尼帽尺寸 Attaching Bolt Size
2", 2.5", 3", 4", 5"	66 x 92 mm (2-3/8" x 3-5/8")	45 x 75 mm (1-3/4" x 3")	6.35mm(1/4")
2", 2.5", 3", 4", 5"	76 x 103 mm (3" x 4-1/16")	60 x 80 mm (2-3/8" x 3-1/8")	6.35mm(1/4")



輪徑×輪寬 Diameter×Width	載重 Load	材質 Material	型號 Item No.			軸承 Bearing	總高 Overall Height	迴旋半徑 Swivel radius
			固定 Fixed	活動 Swivel	剎車 Brake			
50mm x 22.5mm(48.5) (2" x 7/8")	60kgs (132lbs)	全效雙輪 Resolute(Dual Wheels)	1165-02-68D-1(4)	1165-02-68D-2(4)	—	滾珠軸承 Ball Bearing	72mm (2-7/8")	47mm (1-7/8")
50mm x 20mm (2" x 3/4")	70kgs (154lbs)	ZQPU雙輪 ZQPU(Dual Wheels)	1165-02-101-1(4)	1165-02-101-2(4)	—			
	70kgs (154lbs)	ZQPU輪(抗靜電) ZQPU(Dual Anti-Static Wheels)	1165-02-101-1(4)	1165-02-101-2(4)	—			
62.5mm x 23.5mm(50.5) (2-1/2" x 15/16")	80kgs (176lbs)	全效雙輪 Resolute(Dual Wheels)	1165-25-68D-1(4)	1165-25-68D-2(4)	—	滾珠軸承 Ball Bearing	85mm (3-1/4")	56mm (2-1/4")
62.5mm x 20mm (2-1/2" x 3/4")	200kgs (440lbs)	ZQPU雙輪 ZQPU(Dual Wheels)	1165-25-101-1(4)	1165-25-101-2(4)	—			
	150kgs (330lbs)	ZQPU輪(抗靜電) ZQPU(Dual Anti-Static Wheels)	1165-25-101-1(4)	1165-25-101-2(4)	—			
62.5mm x 30mm (2-1/2" x 1-1/8")	120kgs (242lbs)	鋁芯AHPU HPU on AL Core	1165-25-117-1(4)	1165-25-117-2(4)	—			
62.5mm x 23.5mm (2-1/2" x 15/16")	50kgs (110lbs)	全效輪 Resolute Rubber Wheel	1165-25-68-1(4)	1165-25-68-2(4)	—			
	35kgs (77lbs)	導電輪 E-Conductive	1165-25-17-1(4)	1165-25-17-2(4)	—			
75mm x 24mm(51) (3" x 15/16")	90kgs (198lbs)	全效雙輪 Resolute(Dual Wheels)	1165-03-68D-1(4)	1165-03-68D-2(4)	—	滾珠軸承 Ball Bearing	98mm (3-7/8")	63.5mm (2-1/2")
75mm x 20mm (3" x 15/16")	200kgs (440lbs)	ZQPU雙輪 ZQPU(Dual Wheels)	1165-03-101-1(4)	1165-03-101-2(4)	—			
	150kgs (330lbs)	ZQPU輪(抗靜電) ZQPU(Dual Anti-Static Wheels)	1165-03-101-1(4)	1165-03-101-2(4)	—			
75mm x 31mm (3" x 1-1/4")	90kgs (198lbs)	全效輪 Resolute Rubber Wheel	1165-03-68-1(4)	1165-03-68-2(4)	—			
	60kgs (132lbs)	導電輪 E-Conductive	1165-03-17-1(4)	1165-03-17-2(4)	—			
	100kgs (220lbs)	W 全效輪 W Resolute	1165-03-48-1(4)	1165-03-48-2(4)	—			
75mm x 30mm (3" x 1-1/8")	150kgs (330lbs)	鋁芯AQPU QPU on AL Core	1165-03-87-1(4)	1165-03-87-2(4)	—			
100mm x 24.5mm(51.5) (4" x 15/16")	120kgs (264lbs)	全效雙輪 Resolute(Dual Wheels)	1165-04-68D-1(4)	1165-04-68D-2(4)	—	滾珠軸承 Ball Bearing	125mm (4-7/8")	85mm (3-3/8")
100mm x 34mm (4" x 1-3/8")	110kgs (242lbs)	藍色彈力全效輪 Blue Resilient Resolute Rubber	1165-04-50-1(4)	1165-04-50-2(4)	—			
100mm x 31mm (4" x 1-1/4")	80kgs (196lbs)	W 全效輪 W Resolute	1165-04-48-1(4)	1165-04-48-2(4)	—			
	200kgs (440lbs)	鋁芯AQPU QPU on AL Core	1165-04-87-1(4)	1165-04-87-2(4)	—			
125mm x 24.5mm(51.5) (5" x 15/16")	130kgs (286lbs)	全效雙輪 Resolute(Dual Wheels)	1165-05-68D-1(4)	1165-05-68D-2(4)	—	滾珠軸承 Ball Bearing	150mm (5-7/8")	101.5mm (4")
125mm x 36mm (5" x 1-3/8")	130kgs (286lbs)	藍色彈力全效輪 Blue Resilient Resolute Rubber	1165-05-50-1(4)	1165-05-50-2(4)	—			
125mm x 31mm (5" x 1-1/4")	100kgs (220lbs)	W 全效輪 W Resolute	1165-05-48-1(4)	1165-05-48-2(4)	—			
	200kgs (440lbs)	鋁芯AQPU QPU on AL Core	1165-05-87-1(4)	1165-05-87-2(4)	—			

*荷重皆根據ISO測試標準制定 *The load is tested according to the ISO test standard