



# 116S Series 中型

## AMR/AGV-3雙精密軸承活動腳輪系列(中型)

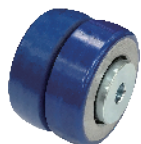
### AMR/AGV-3 Double Precision Ball Bearing Caster (Medium Duty)

載重 Load  
80 - 200 kg

- 採用雙精密軸承，來應對 AMR/AGV 需求的複雜環境：耐久，長距離運行，防塵等特點；適用於中等載荷 AMR/AGV 用。
- With two precision ball bearings embedded in the caster fork, this AMR/AGV-3 caster offer durability, dust-prevention and extended service life, compared to traditional stamping fabrication caster. AMR/AGV-3 caster is suitable for light and medium duty AMR/AGVs.



#### ▶ 輪子選項 Wheel Options



ZQPU 雙輪  
ZQPU (Dual Wheels)



QPU 輪  
QPU



鋁芯AQPU  
QPU on AL Core



ZQPU 輪(抗靜電)  
QPU (Dual Anti-Static Wheels)



藍色彈力全效輪  
Blue Resilient Resolute Rubber



W 全效輪  
W Resolute



滾珠軸承  
Ball Bearing

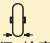




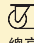

\*有其它抗靜電輪可供選擇，如有需求請聯絡工廠

\*Other Anti-Static Wheels Available, Please Contact The Factory

#### ▶ 底板規格 TOP PLATE SIZE AND BOLT HOLE SPACING

底板尺寸 Top Plate Size	底板孔距 Bolt Hole Spacing	安裝尼帽尺寸 Attaching Bolt Size
60 x 92 mm (2-3/8" x 3-5/8")	45 x 75 mm (1-3/4" x 3")	8 mm (5/16")
85 x 110 mm (3-11/32" x 4-11/23")	60 x 80 ~ 86 mm (2-3/8" x 3-5/32" ~ 3-3/8")	8 mm (5/16")
100 x 115 mm (4" x 4-1/2")	70 x 85 mm (2-5/8" ~ 3" x 3" ~ 3-5/8")	9.5 mm (3/8")



 輪徑×輪寬 Diameter×Width	 載重 Load	 材質 Material	 型號 Item No.			 軸承 Bearing	 總高 Overall Height	 迴旋半徑 Swivel radius
			固定 Fixed	活動 Swivel	剎車 Brake			
50mm x 20mm (41.5) (2" x 3/4")	70 kgs (154 lbs)	ZQPU輪(雙輪) ZQPU(Dual Wheels)	-	1165-25-101-2(3)	-	滾珠軸承 Ball Bearing	87mm	活動 65 mm Swivel 65 mm
	70 kgs (154 lbs)	ZQPU輪(抗靜電) QPU(Dual Anti-Static Wheels)	-	1165-25-101-2(3)	-			
50mm x 45mm (2" x 1-13/16")	70 kgs (154 lbs)	QPU輪 QPU	-	1165-25-53-2(3)	-			
62.5mm x 20mm (41.5) (2-1/2" x 3/4")	200 kgs (440 lbs)	ZQPU輪(雙輪) ZQPU(Dual Wheels)	-	1165-25-101-2(3)	-	滾珠軸承 Ball Bearing	87mm	活動 65 mm Swivel 65 mm
	150 kgs (330 lbs)	ZQPU輪(抗靜電) QPU(Dual Anti-Static Wheels)	-	1165-25-101-2(3)	-			
62.5mm x 45mm (2-1/2" x 1-13/16")	200 kgs (440 lbs)	QPU輪 QPU	-	1165-25-53-2(3)	-			
62.5mm x 20mm (41.5) (2-1/2" x 3/4")	200 kgs (440 lbs)	ZQPU輪(雙輪) ZQPU(Dual Wheels)	-	1165-25-101-2(3)	-	滾珠軸承 Ball Bearing	94mm	活動 62 mm Swivel 62 mm
	150 kgs (330 lbs)	ZQPU輪(抗靜電) QPU(Dual Anti-Static Wheels)	-	1165-25-101-2(3)	-			
62.5mm x 45mm (2-1/2" x 1-13/16")	200 kgs (440 lbs)	QPU輪 QPU	-	1165-25-53-2(3)	-			
75mm x 20mm (41.5) (3" x 3/4")	200 kgs (440 lbs)	ZQPU輪(雙輪) ZQPU(Dual Wheels)	-	1165-03-101-2(3)	-	滾珠軸承 Ball Bearing	102.5mm	活動 65 mm Swivel 65 mm
	150 kgs (330 lbs)	ZQPU輪(抗靜電) QPU(Dual Anti-Static Wheels)	-	1165-03-101-2(3)	-			
75mm x 45mm (3" x 1-13/16")	200 kgs (440 lbs)	QPU輪 QPU	-	1165-03-53-2(3)	-			
75mm x 32mm (3" x 1-1/4")	150 kgs (330 lbs)	鋁芯AQP QPU on AL Core	-	1165-03-87-2(3)	-			
75mm x 20mm (41.5) (3" x 3/4")	200 kgs (440 lbs)	ZQPU輪(雙輪) ZQPU(Dual Wheels)	-	1165-03-101-2(3)	-	滾珠軸承 Ball Bearing	105.5mm	活動 72.5 mm Swivel 72.5 mm
	150 kgs (330 lbs)	ZQPU輪(抗靜電) QPU(Dual Anti-Static Wheels)	-	1165-03-101-2(3)	-			
75mm x 45mm (3" x 1-13/16")	200 kgs (440 lbs)	QPU輪 QPU	-	1165-03-53-2(3)	-			
75mm x 32mm (3" x 1-1/4")	150 kgs (330 lbs)	鋁芯AQP QPU on AL Core	-	1165-03-87-2(3)	-			
100mm x 32mm (4" x 1-1/4")	200 kgs (440 lbs)	鋁芯AQP QPU on AL Core	-	1165-04-87-2(3)	-	滾珠軸承 Ball Bearing	130mm	活動 86 mm Swivel 86 mm
	80 kgs (176 lbs)	W全效輪 W Resolute	-	1165-04-48-2(3)	-			
100mm x 34mm (4" x 1-1/2")	110 kgs (242 lbs)	藍色彈力全效輪 Blue Resilient Resolute Rubber	-	1165-04-50-2(3)	-			
125mm x 32mm (5" x 1-1/4")	200 kgs (440 lbs)	鋁芯AQP QPU on AL Core	-	1165-05-87-2(3)	-	滾珠軸承 Ball Bearing	158mm	活動 99 mm Swivel 99 mm
	100 kgs (220 lbs)	W全效輪 W Resolute	-	1165-05-48-2(3)	-			
125mm x 36mm (5" x 1-1/2")	130 kgs (287 lbs)	藍色彈力全效輪 Blue Resilient Resolute Rubber	-	1165-05-50-2(3)	-			

\*荷重皆根據ISO測試標準制定 \*The load is tested according to the ISO test standard