



116S Series 重型

AMR/AGV-2活動腳輪系列(重型)

Heavy Duty AMR/AGV-2 Caster

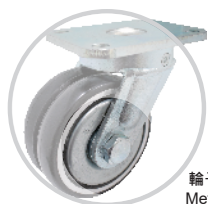
載重 Load
70 - 400 kg

- 腳架採用高鋼性板材，配合熱處理珠道來達到極高的荷重與長時間的使用壽命，同時又能夠確保低重心的要求，適用於 AMR/AGV (無人車)使用。
- Caster fork is made of high tensile steel with harden raceway to provide long lasting service life and extreme high load capacity while maintaining low profile and overall height. It is suitable for application like AMR/AGV and robotic industry products.

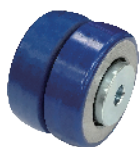


特色區 Features

輪子選項 Wheel Options



輪子可附金屬防塵蓋(供選擇)
Metal Thread Guard (optinal)



ZQPU雙輪
ZQPU (Dual Wheels)



QPU輪
QPU



滾珠軸承
Ball Bearing



ZQPU輪(抗靜電)
QPU(Dual Anti-Static Wheels)



金鋼輪
King Kong Wheel

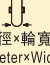
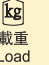





*有其它抗靜電輪可供選擇，如有需求請聯絡工廠

*Other Anti-Static Wheels Available, Please Contact The Factory

底板規格 TOP PLATE SIZE AND BOLT HOLE SPACING

編號 Suffix	底板尺寸 Top Plate Size	底板孔距 Bolt Hole Spacing	安裝尼帽尺寸 Attaching Bolt Size
1.5", 2"	51 x 65 mm (2" x 2-9/16")	36 x 51.5 mm (1-13/32" x 2-1/32")	6 mm (1/4")
	51 x 84 mm (2" x 3-5/16")	37 x 70 mm (1-15/32" x 2-3/4")	6 mm (1/4")
	60 x 60 mm (2-3/8" x 2-3/8")	42.5 x 42.5 mm (1-11/16" x 1-11/16")	6 mm (1/4")
	60 x 90 mm (2-3/8" x 3-17/32")	44.5 x 73 mm (1-3/14" x 2-7/8")	8 mm (5/16")
2.5", 3", 4"	85 x 110 mm (3-11/32" x 4-11/23")	60 x 80~86 mm (2-3/8" x 3-5/32"~3-3/8")	8 mm (5/16")



 輪徑×輪寬 Diameter×Width	 載重 Load	** 2000公里載重 Guarantee 2000 KM/ 1250 Miles	 材質 Material	 型號 Item No.			 軸承 Bearing	 總高 Overall Height	 迴旋半徑 Swivel radius
				固定 Fixed	活動 Swivel	剎車 Brake			
34mm x 15mm (33) (1-21/64" x 19/32")	70 kgs (154 lbs)	50 kgs (110 lbs)	ZQPU輪(雙輪) ZQPU(Dual Wheels)	1165-15-101-1(2)	1165-15-101-2(2)	—	滾珠軸承 Ball Bearing	52mm (2-3/64")	活動 40 mm Swivel 40 mm
	70 kgs (154 lbs)	50 kgs (110 lbs)	ZQPU輪(抗靜電) QPU(Dual Anti-Static Wheels)	1165-15-101-1(2)	1165-15-101-2(2)	—			
50mm x 20mm (41.5) (2" x 3/4")	70 kgs (154 lbs)	50 kgs (110 lbs)	ZQPU輪(雙輪) ZQPU(Dual Wheels)	1165-02-101-1(2)	1165-02-101-2(2)	—	滾珠軸承 Ball Bearing	79mm (3-7/64")	活動 46 mm Swivel 46 mm
	70 kgs (154 lbs)	50 kgs (110 lbs)	ZQPU輪(抗靜電) QPU(Dual Anti-Static Wheels)	1165-02-101-1(2)	1165-02-101-2(2)	—			
50mm x 40mm (2" x 1-9/16")	70 kgs (154 lbs)	50 kgs (110 lbs)	QPU輪 QPU	1165-02-53-1(2)	1165-02-53-2(2)	—			
50mm x 45mm (2" x 1-13/16")	70 kgs (154 lbs)	—	金鋼輪 King Kong Wheel	1165-02-100-1(2)	1165-02-100-2(2)	—			
62.5mm x 20mm (41.5) (2-1/2" x 3/4")	250 kgs (551 lbs)	84 kgs (185 lbs)	ZQPU輪(雙輪) ZQPU(Dual Wheels)	1165-25-101-1(2)	1165-25-101-2(2)	—	滾珠軸承 Ball Bearing	87mm (3-27/64")	活動 65 mm Swivel 65 mm
	200 kgs (440 lbs)	67 kgs (147 lbs)	ZQPU輪(抗靜電) QPU(Dual Anti-Static Wheels)	1165-25-101-1(2)	1165-25-101-2(2)	—			
62.5mm x 45mm (2-1/2" x 1-13/16")	250 kgs (551 lbs)	—	金鋼輪 King Kong Wheel	1165-25-100-1(2)	1165-25-100-2(2)	—			
	200 kgs (440 lbs)	67 kgs (147 lbs)	QPU輪 QPU	1165-25-80-1(2)	1165-25-80-2(2)	—			
62.5mm x 20mm (41.5) (2-1/2" x 3/4")	250 kgs (551 lbs)	84 kgs (185 lbs)	ZQPU輪(雙輪) ZQPU(Dual Wheels)	1165-25-101-1(2)	1165-25-101-2(2)	—	滾珠軸承 Ball Bearing	94mm (3-45/64")	活動 62 mm Swivel 62 mm
	200 kgs (440 lbs)	67 kgs (147 lbs)	ZQPU輪(抗靜電) QPU(Dual Anti-Static Wheels)	1165-25-101-1(2)	1165-25-101-2(2)	—			
62.5mm x 45mm (2-1/2" x 1-13/16")	250 kgs (551 lbs)	—	金鋼輪 King Kong Wheel	1165-25-71-1(2)	1165-25-71-2(2)	—			
	200 kgs (440 lbs)	67 kgs (147 lbs)	QPU輪 QPU	1165-25-53-1(2)	1165-25-53-2(2)	—			
75mm x 20mm (41.5) (3" x 3/4")	300 kgs (661 lbs)	100 kgs (220 lbs)	ZQPU輪(雙輪) ZQPU(Dual Wheels)	1165-03-101-1(2)	1165-03-101-2(2)	—	滾珠軸承 Ball Bearing	105.5mm (4-5/32")	活動 72.5 mm Swivel 72.5 mm
	250 kgs (551 lbs)	84 kgs (185 lbs)	ZQPU輪(抗靜電) QPU(Dual Anti-Static Wheels)	1165-03-101-1(2)	1165-03-101-2(2)	—			
75mm x 45mm (3" x 1-13/16")	300 kgs (661 lbs)	—	金鋼輪 King Kong Wheel	1165-03-100-1(2)	1165-03-100-2(2)	—			
	250 kgs (551 lbs)	84 kgs (185 lbs)	QPU輪 QPU	1165-03-80-1(2)	1165-03-80-2(2)	—			
75mm x 20mm (41.5) (3" x 3/4")	300 kgs (661 lbs)	100 kgs (220 lbs)	ZQPU輪(雙輪) ZQPU(Dual Wheels)	1165-03-101-1(2)	1165-03-101-2(2)	—	滾珠軸承 Ball Bearing	115.5mm (4-17/32")	活動 72.5 mm Swivel 72.5 mm
	250 kgs (551 lbs)	84 kgs (185 lbs)	ZQPU輪(抗靜電) QPU(Dual Anti-Static Wheels)	1165-03-101-1(2)	1165-03-101-2(2)	—			
75mm x 45mm (3" x 1-13/16")	300 kgs (661 lbs)	—	金鋼輪 King Kong Wheel	1165-03-71-1(2)	1165-03-71-2(2)	—			
	300 kgs (661 lbs)	100 kgs (661 lbs)	QPU輪 QPU	1165-03-53-1(2)	1165-03-53-2(2)	—			
100mm x 22mm (41.5) (4" x 7/8")	400 kgs (881 lbs)	134 kgs (295 lbs)	ZQPU輪(雙輪) ZQPU(Dual Wheels)	1165-04-101-1(2)	1165-04-101-2(2)	—	滾珠軸承 Ball Bearing	125mm (4-59/64")	活動 90 mm Swivel 90 mm
	350 kgs (771 lbs)	117 kgs (157 lbs)	ZQPU輪(抗靜電) QPU(Dual Anti-Static Wheels)	1165-04-101-1(2)	1165-04-101-2(2)	—			

*荷重皆根據ISO測試標準制定

*The load is tested according to the ISO test standard

** 正常使用狀態下得勝可保證使用2000公里，得勝保留對所有測試手法&保證2000公里的最終解釋權

** Guarantee 2000 km life span on the selected AGV caster models under normal field application.
Dersheng reserves the right of the final interpretation on the caster test method and 2000 km guarantee.