



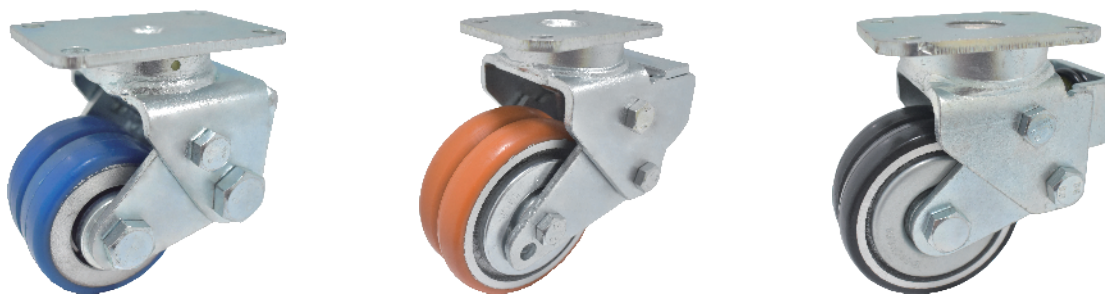
116S Series 重型

AMR/AGV-1彈簧輪系列

Heavy Duty AMR/AGV Spring-Loading Caster

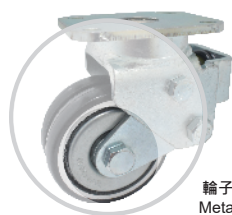
載重 Load
70 - 500 kg

- 腳架採用高鋼性板材，配合熱處理珠道來達到極高的荷重與長時間的使用壽命，同時又能夠確保低重心的要求，適用於 AMR/AGV (無人車)使用。其中搭配彈簧設計，有效吸震維持機械平穩性。
- Caster fork is made of high tensile steel with harden raceway to provide long lasting service life and extreme high load capacity while maintaining low profile and overall height. It is suitable for application like AMR/AGV and robotic industry products. High quality spring design with excellent shock-absorbing capabilities keep machines carried by the caster stable while traveling across uneven surface.

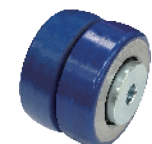


▶▶ 特色區 Features

▶▶ 輪子選項 Wheel Options



輪子可附金屬防塵蓋(供選擇)
Metal Thread Guard (optional)



ZQPU雙輪
ZQPU (Dual Wheels)



QPU輪
QPU



滾珠軸承
Ball Bearing



ZQPU輪(抗靜電)
QPU(Dual Anti-Static Wheels)



金鋼輪
King Kong Wheel

*有其它抗靜電輪可供選擇，如有需求請聯絡工廠

*Other Anti-Static Wheels Available, Please Contact The Factory

▶▶ 底板規格 TOP PLATE SIZE AND BOLT HOLE SPACING

編號 Suffix	底板尺寸 Top Plate Size	底板孔距 Bolt Hole Spacing	安裝尼帽尺寸 Attaching Bolt Size
2", 2.5"	51 x 65 mm (2" x 2-9/16")	36 x 51.5 mm (1-13/32" x 2-1/32")	6 mm (1/4")
	51 x 84 mm (2" x 3-5/16")	37 x 70 mm (1-15/32" x 2-3/4")	6 mm (1/4")
	60 x 60 mm (2-3/8" x 2-3/8")	42.5 x 42.5 mm (1-11/16" x 1-11/16")	6 mm (1/4")
	60 x 90 mm (2-3/8" x 3-17/32")	44.5 x 73 mm (1-3/14" x 2-7/8")	8 mm (5/16")
3", 4", 5", 6"	85 x 110 mm (3-11/32" x 4-11/23")	60 x 80~86 mm (2-3/8" x 3-5/32"~3-3/8")	8 mm (5/16")



輪徑×輪寬 Diameter×Width	載重 Load	2000公里載重 Guarantee 2000 KM/ 1250 Miles	材質 Material	型號 Item No.			軸承 Bearing	總高 Overall Height	迴旋半徑 Swivel radius
				固定 Fixed	活動 Swivel	剎車 Brake			
50mm x 20mm (41.5) (2" x 3/4")	70 kgs (154 lbs)	50 kgs (110 lbs)	ZQPU輪(雙輪) ZQPU(Dual Wheels)	1165-02-101-1	1165-02-101-2	—	滾珠軸承 Ball Bearing	78mm (3-5/64")	活動 55 mm Swivel 55 mm
	70 kgs (154 lbs)	50 kgs (110 lbs)	ZQPU輪(抗靜電) QPU(Dual Anti-Static Wheels)	1165-02-101-1	1165-02-101-2	—			
50mm x 40mm (2" x 1-9/16")	70 kgs (154 lbs)	50 kgs (110 lbs)	QPU輪 QPU	1165-02-53-1	1165-02-53-2	—	滾珠軸承 Ball Bearing	78mm (3-5/64")	活動 55 mm Swivel 55 mm
50mm x 45mm (2" x 1-13/16")	70 kgs (154 lbs)	—	金鋼輪 King Kong Wheel	1165-02-100-1	1165-02-100-2	—			
62.5mm x 20mm (41.5) (2-1/2" x 3/4")	250 kgs (551 lbs)	84 kgs (185 lbs)	ZQPU輪(雙輪) ZQPU(Dual Wheels)	1165-25-101-1	1165-25-101-2	—	滾珠軸承 Ball Bearing	100mm (4")	活動 60 mm Swivel 60 mm
	200 kgs (440 lbs)	67 kgs (147 lbs)	ZQPU輪(抗靜電) QPU(Dual Anti-Static Wheels)	1165-25-101-1	1165-25-101-2	—			
62.5mm x 45mm (2-1/2" x 1-13/16")	250 kgs (551 lbs)	—	金鋼輪 King Kong Wheel	1165-25-100-1	1165-25-100-2	—	滾珠軸承 Ball Bearing	100mm (4")	活動 60 mm Swivel 60 mm
	200 kgs (440 lbs)	67 kgs (147 lbs)	QPU輪 QPU	1165-25-80-1	1165-25-80-2	—			
75mm x 20mm (41.5) (3" x 3/4")	300 kgs (661 lbs)	100 kgs (220 lbs)	ZQPU輪(雙輪) ZQPU(Dual Wheels)	1165-03-101-1	1165-03-101-2	—	滾珠軸承 Ball Bearing	116mm (4-9/16")	活動 65 mm Swivel 65 mm
	250 kgs (551 lbs)	84 kgs (185 lbs)	ZQPU輪(抗靜電) QPU(Dual Anti-Static Wheels)	1165-03-101-1	1165-03-101-2	—			
75mm x 45mm (3" x 1-13/16")	300 kgs (661 lbs)	—	金鋼輪 King Kong Wheel	1165-03-100-1	1165-03-100-2	—	滾珠軸承 Ball Bearing	116mm (4-9/16")	活動 65 mm Swivel 65 mm
	250 kgs (551 lbs)	84 kgs (185 lbs)	QPU輪 QPU	1165-03-80-1	1165-03-80-2	—			
100mm x 22mm (41.5) (4" x 7/8")	400 kgs (881 lbs)	134 kgs (295 lbs)	ZQPU輪(雙輪) ZQPU(Dual Wheels)	1165-04-101-1	1165-04-101-2	—	滾珠軸承 Ball Bearing	145mm (5-45/64")	活動 84 mm Swivel 84 mm
	350 kgs (771 lbs)	117 kgs (257 lbs)	ZQPU輪(抗靜電) QPU(Dual Anti-Static Wheels)	1165-04-101-1	1165-04-101-2	—			
125mm x 24mm (41.5) (5" x 1")	500 kgs (1100 lbs)	167 kgs (368 lbs)	ZQPU輪(雙輪) ZQPU(Dual Wheels)	1165-05-101-1	1165-05-101-2	—	滾珠軸承 Ball Bearing	175mm (7-1/8")	活動 102 mm Swivel 102 mm
	450 kgs (992 lbs)	150 kgs (330 lbs)	ZQPU輪(抗靜電) QPU(Dual Anti-Static Wheels)	1165-05-101-1	1165-05-101-2	—			
150mm x 24mm (41.5) (6" x 1")	350 kgs (771 lbs)	117 kgs (257 lbs)	ZQPU輪(雙輪) ZQPU(Dual Wheels)	1165-06-101-1	1165-06-101-2	—	滾珠軸承 Ball Bearing	200mm (8-1/8")	活動 130 mm Swivel 130mm
	300 kgs (661 lbs)	100 kgs (220 lbs)	ZQPU輪(抗靜電) QPU(Dual Anti-Static Wheels)	1165-06-101-1	1165-06-101-2	—			

*荷重皆根據ISO測試標準制定

*The load is tested according to the ISO test standard

** 正常使用狀態下得勝可保證使用2000公里，得勝保留對所有測試手法&保證2000公里的最終解釋權

** Guarantee 2000 km life span on the selected AGV caster models under normal field application.

Dersheng reserves the right of the final interpretation on the caster test method and 2000 km guarantee.