



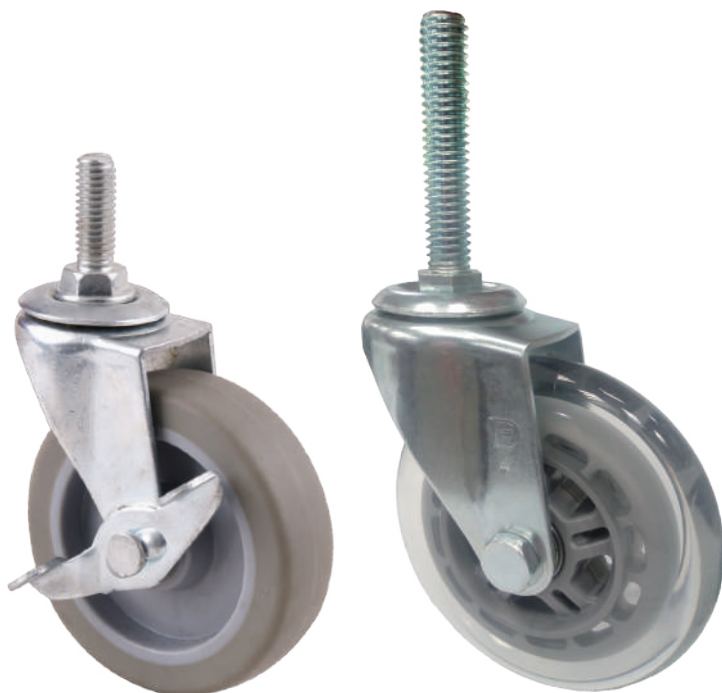
# 1154-CN-R Series 輕型

## 圓波盤系列(大陸)


Light Duty Wire & Shelving/Display (Round Raceway) (China)

- 輕型腳輪，製成經濟，適用於輕型置物架等。
- Light-duty, economical choice, for display racks, etc.

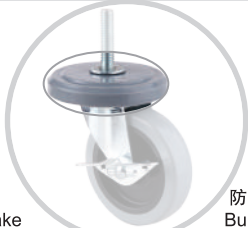
載重 Load  
35-90 kg



▶▶ 特色區 Features



軸剎  
Axle Lock Brake



防撞蓋  
Bumper

### ▶▶ 輪子選項 Wheel Options



高科技耐磨聚氨酯  
PU on PP Core



超級人造膠  
TPR on PP Core



橡膠輪  
Rubber



聚乙烯輪  
PVC on PP Core



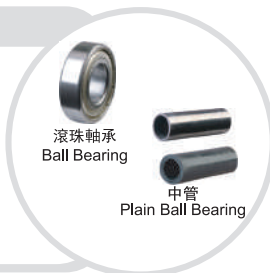
全效輪  
Resolute



塑料輪  
PP



滑板輪  
PU



### ▶▶ 底板規格 TOP PLATE SIZE AND BOLT HOLE SPACING

編號 Suffix	底板尺寸 Top Plate Size	底板孔距 Bolt Hole Spacing	安裝尼帽尺寸 Attaching Bolt Size
3" 4" 5"	58 x 70 mm (2-1/4" x 2-3/4")	40 x 50 mm (1-9/16" x 2-3/16")	8 mm (5/16")
3" 4" 5"	62 x 92 mm (2-3/8" x 3-5/8")	45 x 75 mm (1-3/4" x 3") (高級架底板)	6.35 mm (1/4")

### ▶▶ 插桿規格 CYLINDRICAL STEM SPECIFICATION

編號 Suffix	插桿直徑 X 長度 Diameter x Length	孔位高度 Hole Height	孔尺寸 Bore Size
3" 4" 5"	11 x 38mm	—	C型銅扣環(Grip Ring)



### 絲扣規格 THREADED STEM SPECIFICATION

編號 Suffix	絲扣牙徑 X 長度 Threaded Size	編號 Suffix	絲扣牙徑 X 長度 Threaded Size	編號 Suffix	絲扣牙徑 X 長度 Threaded Size
3" 4" 5"	3/8-16UNC x 32mm	3" 4" 5"	M10 x 25mm	3" 4" 5"	M12 x 25mm
3" 4" 5"	1/2-12UNC x 38mm				

輪徑×輪寬 Diameter×Width	載重 Load	材質 Material	型號 Item No.			軸承 Bearing	總高 Overall Height	迴旋半徑 Swivel radius	
			固定 Fixed	活動 Swivel	剎車 Brake			活動 Swivel	剎車 Brake
75mmx21mm (3"x7/8")	50 kgs (110 lbs)	高科技耐磨聚氨酯 PU on PP Core	-	1154-R-03-31-2	1154-R-03-31-4	中管 Plain Bearing	97 mm (3-13/16")	活動 68mm 剎車 68mm	Swivel 68mm Swivel W/Side Brake 68mm
	50 kgs (110 lbs)	橡膠輪 Rubber	-	1154-R-03-06-2	1154-R-03-06-4				
75mmx24mm (3"x15/16")	60 kgs (130 lbs)	滑板輪 PU	-	1154-R-03-88-2	-	滾珠 Ball Bearing	97 mm (3-13/16")	活動 68mm	Swivel 68mm
75mmx25 mm (3"x1")	70 kgs (155 lbs)	聚乙烯輪 PVC on PP Core	-	1154-R-03-27-2	1154-R-03-27-4	中管 Plain Bearing	97 mm (3-13/16")	活動 68mm 剎車 68mm	Swivel 68mm Swivel W/Side Brake 68mm
	60 kgs (130 lbs)	橡膠輪 Rubber	-	1154-R-03-06-2	1154-R-03-06-4				
	70 kgs (155 lbs)	超級人造膠 TPR on PP Core	-	1154-R-03-75-2	1154-R-03-75-4				
	70 kgs (155 lbs)	塑料輪 PP	-	1154-R-03-29-2	1154-R-03-29-4				
100mmx24mm (4"x15/16")	70 kgs (155 lbs)	滑板輪 PU	-	1154-R-04-88-2	-	滾珠 Ball Bearing	120 mm (4-11/16")	活動 81mm	Swivel 81mm
100mmx25mm (4"x1")	70 kgs (155 lbs)	高科技耐磨聚氨酯 PU on PP Core	--	1154-R-04-31-2	1154-R-04-31-4	中管 Plain Bearing	120 mm (4-11/16")	活動 81mm 剎車 81mm	Swivel 81mm Swivel W/Side Brake 81mm
	70 kgs (155 lbs)	超級人造膠 TPR on PP Core	--	1154-R-04-75-2	1154-R-04-75-4				
	70 kgs (155 lbs)	橡膠輪 Rubber	--	1154-R-04-06-2	1154-R-04-06-4				
	90 kgs (198 lbs)	塑料輪 PP	-	1154-R-04-29-2	1154-R-04-29-4				
125mmx25mm (5"x1")	90 kgs (198 lbs)	高科技耐磨聚氨酯 PU on PP Core	-	1154-R-05-31-2	1154-R-05-31-4	中管 Plain Bearing	146 mm (5-3/4")	活動 93mm 剎車 93mm	Swivel 93mm Swivel W/Side Brake 93mm
	80 kgs (176 lbs)	超級人造膠 TPR on PP Core	-	1154-R-05-75-2	1154-R-05-75-4				
	90 kgs (198 lbs)	橡膠輪 Rubber	-	1154-R-05-06-2	1154-R-05-06-4				