



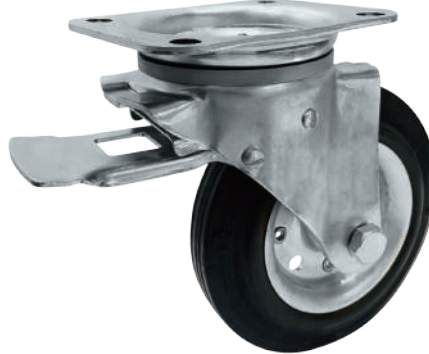
1153-SS Series 重型

53歐款不鏽鋼系列

Heavy Duty 2" Wide General Purposes Stainless Steel Caster (European Style)

- 歐規底板，腳架採特別結構設計，荷重高、轉動靈活，雙剎制動，適用於中、重型台車。
- Pressed stainless steel caster horn/ housing designed for European market. Swivel easily with high performance total lock brake, suitable for medium and heavy duty logistic equipment.

載重 Load
125-350 kg



特色區 Features



後剎
Rear Total Lock



鋁芯AQPU
QPU on AL Core



鋁芯橡膠輪
Rubber on AL Core



MRC輪
Nylon Wheel



彈力全效輪(灰)
Resilient Resolute Wheel (Gray Tread)



實心橡膠彈力輪(塑框+黑膠條)
Black Rubber Wheel (Plastic Core)



實心橡膠彈力輪(塑框+灰膠條)
Gray Rubber Wheel (Plastic Core)



彈力全效輪(黑藍)
Resilient Resolute Wheel (Blue Tread)



W全效輪
W Resolute Wheel



全效輪(圓弧形)
Resolute(Round Shape)



滾珠軸承
Ball Bearing



中管
Plain Bearing



精密長環軸承
Annular ball bearing

底板規格 TOP PLATE SIZE AND BOLT HOLE SPACING

編號 Suffix	底板尺寸 Top Plate Size	底板孔距 Bolt Hole Spacing	安裝尼帽尺寸 Attaching Bolt Size
1	137 x 105mm(5-3/8" x 4-1/8")	105 x 80/75mm(4-1/8" x 3-1/8")	10mm (3/8")

空鉚規格 SINGLE BOLT HOLE

編號 Suffix	孔徑 Centre Hole
1	13mm



輪徑×輪寬 Diameter×Width	載重 Load	材質 Material	型號 Item NO.			軸承 Bearing	總高 Overall Height	偏心距 Offset (mm)	迴旋半徑 Swivel radius (mm)
			固定 Fixed	活動 Swivel	剎車 Brake				
150 x 40mm (6" x 1-9/16")	280kgs (615 lbs)	鋁芯橡膠輪 Rubber on Aluminum Core	1153-06-22-1	1153-06-22-2	1153-06-22-4	滾珠 Ball Bearing	190mm (7-1/2")	55mm	活動131mm 後刹131mm
	350kgs (770 lbs)	MRC輪 Nylon Wheel	1153-06-45-1	1153-06-45-2	1153-06-45-4				
	125kgs (275 lbs)	實心橡膠彈力輪(塑框+黑膠條) Black Rubber Wheel(Plastic Core)	1153-06-104-1	1153-06-104-2	1153-06-104-4	中管 Plain Bearing			
	125kgs (275 lbs)	實心橡膠彈力輪(塑框+灰膠條) Gray Rubber Wheel(Plastic Core)	1153-06-107-1	1153-06-107-2	1153-06-107-4				
150 x 42mm (6" x 1-5/8")	350kgs (770 lbs)	鋁芯AQP(圓弧) QPU on AL Core (Round)	1153-06-87-1	1153-06-87-2	1153-06-87-4	滾珠 Ball Bearing			
150 x 50mm (6" x 2")	350kgs (770 lbs)	鋁芯AQP(平面) QPU on AL Core (Flat)	1153-06-87-1	1153-06-87-2	1153-06-87-4	滾珠 Ball Bearing	190mm (7-1/2")	55mm	活動131mm 後刹131mm
	272 kgs (600 lbs)	W全效輪 W Resolute	1153-06-48-1	1153-06-48-2	1153-06-48-4	精密長珠軸承 Annular ball bearing			
	204 kgs (450 lbs)	全效輪(圓弧形) Resolute (Round Shape)	1153-06-44-1	1153-06-44-2	1153-06-44-4				
160 x 40mm (6-5/16" x 1-9/16")	350kgs (770 lbs)	MRC輪 Nylon Wheel	1153-65-45-1	1153-65-45-2	1153-65-45-4	滾珠 Ball Bearing	200mm (7-7/8")	55mm	活動136mm 後刹136mm
	135kgs (295 lbs)	實心橡膠彈力輪(塑框+黑膠條) Black Rubber Wheel(Plastic Core)	1153-65-104-1	1153-65-104-2	1153-65-104-4	中管 Plain Bearing			
	135kgs (295 lbs)	實心橡膠彈力輪(塑框+灰膠條) Gray Rubber Wheel(Plastic Core)	1153-65-107-1	1153-65-107-2	1153-65-107-4				
160 x 42mm (6-5/16" x 1-5/8")	350kgs (770 lbs)	鋁芯AQP(圓弧) QPU on AL Core (Round)	1153-65-87-1	1153-65-87-2	1153-65-87-4	滾珠 Ball Bearing	200mm (7-7/8")	55mm	活動136mm 後刹136mm
	300kgs (660 lbs)	鋁芯橡膠輪 Rubber on Aluminum Core	1153-65-22-1	1153-65-22-2	1153-65-22-4				
160 x 48mm (6-5/16" x 1-7/8")	300kgs (660 lbs)	彈力全效輪(灰灰) Resilient Resolute Wheel (Gray tread)	1153-65-105-1	1153-65-105-2	1153-65-105-4	滾珠 Ball Bearing	200mm (7-7/8")	55mm	活動136mm 後刹136mm
	300kgs (660 lbs)	彈力全效輪(黑藍) Resilient Resolute Wheel (Blue tread)	1153-65-50-1	1153-65-50-2	1153-65-50-4	精密長珠軸承 Annular ball bearing			
160 x 50mm (6-5/16" x 2")	350kgs (770 lbs)	鋁芯AQP(平面) QPU on AL Core (Flat)	1153-65-87-1	1153-65-87-2	1153-65-87-4	滾珠 Ball Bearing	220mm (8-11/16")	55mm	活動145mm 後刹145mm
180 x 44mm (7" x 1-3/4")	350kgs (770 lbs)	鋁芯AQP(圓弧) QPU on AL Core (Round)	1153-07-87-1	1153-07-87-2	1153-07-87-4	滾珠 Ball Bearing			
	180 x 50mm (7" x 2")	175kgs (385 lbs)	實心橡膠彈力輪(塑框+黑膠條) Black Rubber Wheel(Plastic Core)	1153-07-104-1	1153-07-104-2	1153-07-104-4	中管 Plain Bearing	220mm (8-11/16")	55mm
175kgs (385 lbs)		實心橡膠彈力輪(塑框+灰膠條) Gray Rubber Wheel(Plastic Core)	1153-07-107-1	1153-07-107-2	1153-07-107-4				
200 x 44mm (8" x 1-3/4")	350kgs (770 lbs)	鋁芯橡膠輪 Rubber on Aluminum Core	1153-08-22-1	1153-08-22-2	1153-08-22-4	滾珠 Ball Bearing	240mm (9-1/2")	55mm	活動155mm 後刹155mm
200 x 48mm (8" x 1-7/8")	325kgs (715 lbs)	彈力全效輪(灰灰) Resilient Resolute Wheel (Gray tread)	1153-08-105-1	1153-08-105-2	1153-08-105-4	滾珠 Ball Bearing			
		325kgs (715 lbs)	彈力全效輪(黑藍) Resilient Resolute Wheel (Blue tread)	1153-08-50-1	1153-08-50-2	1153-08-50-4	精密長珠軸承 Annular ball bearing		
200 x 50mm (8" x 2")	350kgs (770 lbs)	鋁芯AQP(平面) QPU on AL Core (Flat)	1153-08-87-1	1153-08-87-2	1153-08-87-4	滾珠 Ball Bearing	240mm (9-1/2")	55mm	活動155mm 後刹155mm
	350kgs (770 lbs)	鋁芯AQP(圓弧) QPU on AL Core (Round)	1153-08-87-1	1153-08-87-2	1153-08-87-4				
	350kgs (770 lbs)	MRC輪 Nylon Wheel	1153-08-45-1	1153-08-45-2	1153-08-45-4				
	205kgs (450 lbs)	實心橡膠彈力輪(塑框+黑膠條) Black Rubber Wheel(Plastic Core)	1153-08-104-1	1153-08-104-2	1153-08-104-4	中管 Plain Bearing			
	205kgs (450 lbs)	實心橡膠彈力輪(塑框+灰膠條) Gray Rubber Wheel(Plastic Core)	1153-08-107-1	1153-08-107-2	1153-08-107-4				
	306 kgs (675 lbs)	W全效輪 W Resolute	1153-08-48-1	1153-08-48-2	1153-08-48-4	精密長珠軸承 Annular ball bearing			
	272 kgs (600 lbs)	全效輪(圓弧形) Resolute(Round Shape)	1153-08-44-1	1153-08-44-2	1153-08-44-4				