



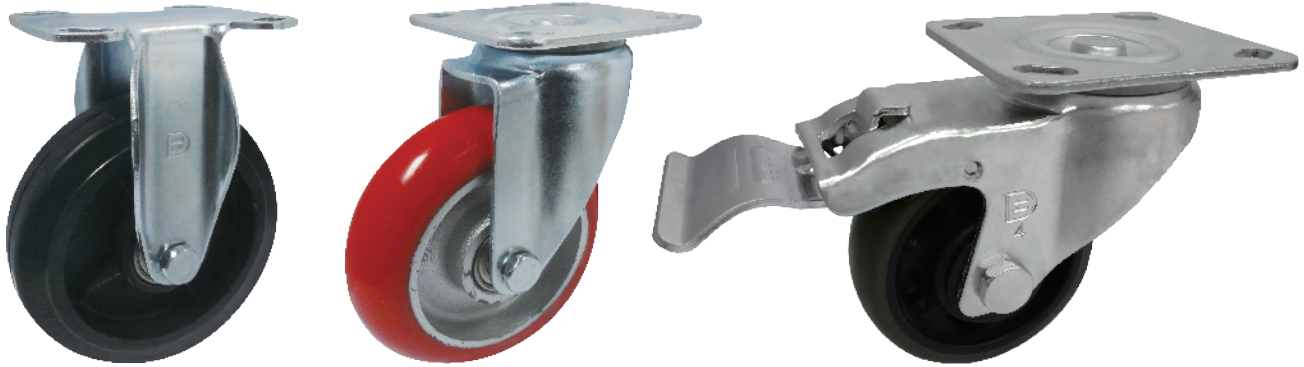
1151 Series 中重型

51 D型底板系列

1-1/2" Wide General Purposes Caster (American Style)

- 腳架採特別結構設計，特高荷重、3.5mm板，轉動靈活，雙煞制動，適用於中、重型台車
- Extreme heavy-duty, made of 3.5mm thick steel, swivel easily with high performance total lock brake, suitable for medium and heavy duty logistic equipment.

載重 Load
140-450kg



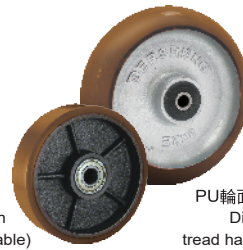
特色區 Features



雙煞(超大踏板)(常規)
Total Lock Brake with
Extra Big Pedal (standard)



雙煞(短踏板)
Total Lock Brake with
Short Pedal (also available)



PU輪面可以變化硬度
Different PU
tread hardness available

輪子選項 Wheel Options

鐵芯NBR橡膠輪
NBR Rubber on Cast



鐵芯聚氨酯
PU on Cast



三星輪
Rubber on Cast



環保NBR橡膠輪
Non-marking Rubber on Cast



W全效輪
W Resolute



EPU輪
EPU



滾珠軸承
Ball Bearing



尼龍輪
Nylon



銹輪
Cast Iron



CPD輪
CPD



WMRC輪
WMRC



WCPD輪
WCPD



QPU輪
QPU



EQPU輪
EQPU






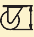



鋁芯AQP
QPU on AL Core

底板規格 TOP PLATE SIZE AND BOLT HOLE SPACING

編號 Suffix	底板尺寸 Top Plate Size	底板孔距 Bolt Hole Spacing	安裝尼帽尺寸 Attaching Bolt Size
1	85 x 105 mm (3-5/16" x 4-1/8")	60 x 80 mm 2-3/8"x3-1/4"(European Plate)	8 mm (5/16")
2	95 x 65 mm (3-3/4" x 2-1/2")	75 x 45 mm (3" x 1-3/4")	8 mm (5/16")
3	100 x 115 mm (3-7/8" x 4-1/2")	75 x 80 mm (3" x 3-1/4")	10 mm (3/8")



 輪徑×輪寬 Diameter×Width	 載重 Load	 材質 Material	 型號 Item No.			 軸承 Bearing	 總高 Overall Height	 迴旋半徑 Swivel radius
			固定 Fixed	活動 Swivel	剎車 Brake			
93mm x 28mm (3-21/32" x 1-3/32")	250 kgs (550 lbs)	鑄輪 Cast Iron	1151(D)-03-14-1	1151(D)-03-14-2	-	滾珠 Ball Bearing	126.5mm (5")	活動 86.5mm Swivel 86.5mm
100mm x 32mm (4" x 1-1/4")	200 kgs (440 lbs)	尼龍輪 Nylon	1151(D)-04-07-1	1151(D)-04-07-2	1151(D)-04-07-4	滾珠 Ball Bearing	130mm (5-1/16")	活動 90mm 剎車 137mm (短 踏板) 剎車 160mm (超 大踏板) Swivel 90mm Swivel W/Brake 137mm (Short Pedal) Swivel W/Brake 160mm (Extra Big Pedal)
	150 kgs (330 lbs)	CPD輪 CPD	1151(D)-04-49-1	1151(D)-04-49-2	1151(D)-04-49-4			
100mm x 34mm (4" x 1-1/3")	200 kgs (440 lbs)	鐵芯聚氨酯 PU on Cast	1151(D)-04-33-1	1151(D)-04-33-2	1151(D)-04-33-4			
	300 kgs (660 lbs)	QPU輪 QPU	1151(D)-04-80-1	1151(D)-04-80-2	1151(D)-04-80-4			
	150 kgs (330 lbs)	鐵芯NBR橡膠輪 NBR Rubber on Cast	1151(D)-04-04-1	1151(D)-04-04-2	1151(D)-04-04-4			
150 kgs (330 lbs)	環保NBR橡膠輪 Non-marking Rubber on Cast	1151(D)-04-11-1	1151(D)-04-11-2	1151(D)-04-11-4				
100mm x 35mm (4" x 1-1/8")	150 kgs (330 lbs)	三星輪 Rubber on Cast	1151(D)-04-03-1	1151(D)-04-03-2	1151(D)-04-03-4			
100mm x 36mm (4" x 1-7/16")	325 kgs (715 lbs)	鋁芯AQPU輪(圓弧) QPU on AL Core (Round)	1151(D)-04-87-1	1151(D)-04-87-2	1151(D)-04-87-4	滾珠 Ball Bearing	130mm (5-1/16")	活動 90mm 剎車 137mm (短 踏板) 剎車 160mm (超 大踏板) Swivel 90mm Swivel W/Brake 137mm (Short Pedal) Swivel W/Brake 160mm (Extra Big Pedal)
100mm x 37.5mm (4" x 1-1/2")	140 kgs (308 lbs)	W全效輪 W Resolute	1151(D)-04-64-1	1151(D)-04-64-2	1151(D)-04-64-4			
100mm x 40mm (4" x 1-9/16")	350 kgs (770 lbs)	鋁芯AQPU輪(圓弧) QPU on AL Core (Round)	1151(D)-04(40)-87-1	1151(D)-04(40)-87-2	1151(D)-04(40)-87-4	滾珠 Ball Bearing	130mm (5-1/16")	活動 90mm 剎車 137mm (短 踏板) 剎車 160mm (超 大踏板) Swivel 90mm Swivel W/Brake 137mm (Short Pedal) Swivel W/Brake 160mm (Extra Big Pedal)
122mm x 36mm (4-13/16" x 1-7/16")	350 kgs (770 lbs)	鑄輪 Cast Iron	1151(D)-04-14-1	1151(D)-04-14-2	-	滾珠 Ball Bearing	153.5mm (6-1/16")	活動 101mm Swivel 101mm
125mm x 37.5mm (5" x 1-1/2")	160 kgs (350 lbs)	W全效輪 W Resolute	1151(D)-05-64-1	1151(D)-05-64-2	1151(D)-05-64-4			
125mm x 40mm (5" x 1-9/16")	350 kgs (770 lbs)	鋁芯AQPU輪(圓弧) QPU on AL Core (Round)	1151(D)-05-87-1	1151(D)-05-87-2	1151(D)-05-87-4	滾珠 Ball Bearing	155mm (6-1/8")	活動 103mm 剎車 137mm (短 踏板) 剎車 160mm (超 大踏板) Swivel 103mm Swivel W/Brake 137mm (Short Pedal) Swivel W/Brake 160mm (Extra Big Pedal)



輪徑×輪寬 Diameter×Width	載重 Load	材質 Material	型號 Item No.			軸承 Bearing	總高 Overall Height	迴旋半徑 Swivel radius
			固定 Fixed	活動 Swivel	剎車 Brake			
125mm x 40mm (5" x 1-9/16")	250 kgs (550 lbs)	鐵芯聚氨酯 PU on Cast	1151(D)-05-33-1	1151(D)-05-33-2	1151(D)-05-33-4	滾珠 Ball Bearing	155mm (6-1/8")	活動 103mm 剎車 137mm (短 踏板) 剎車 160mm (超 大踏板) Swivel 103mm Swivel W/Brake 137mm (Short Pedal) Swivel W/Brake 160mm (Extra Big Pedal)
	350 kgs (770 lbs)	QPU輪 QPU	1151(D)-05-80-1	1151(D)-05-80-2	1151(D)-05-80-4			
	250 kgs (550 lbs)	EPU輪 EPU	1151(D)-05-78-1	1151(D)-05-78-2	1151(D)-05-78-4			
	300 kgs (660 lbs)	EQPU輪 EQPU	1151(D)-05-81-1	1151(D)-05-81-2	1151(D)-05-81-4			
	200 kgs (440 lbs)	三星輪 Rubber on Cast	1151(D)-05-03-1	1151(D)-05-03-2	1151(D)-05-03-4			
	200 kgs (440 lbs)	鐵芯NBR橡膠輪 NBR Rubber on Cast	1151(D)-05-04-1	1151(D)-05-04-2	1151(D)-05-04-4			
	200 kgs (440 lbs)	環保NBR橡膠輪 Non-marking Rubber on Cast	1151(D)-05-11-1	1151(D)-05-11-2	1151(D)-05-11-4			
125mm x 41mm (5" x 1-5/8")	250 kgs (550 lbs)	尼龍輪 Nylon	1151(D)-05-07-1	1151(D)-05-07-2	1151(D)-05-07-4	滾珠 Ball Bearing	182mm (7-1/5")	活動 109mm Swivel 109mm
	200 kgs (440 lbs)	CPD輪 CPD	1151(D)-05-49-1	1151(D)-05-49-2	1151(D)-05-49-4			
138mm x 42mm (5-7/16" x 1-5/8")	350 kgs (770 lbs)	銑輪 Cast Iron	1151(D)-05-14-1	1151(D)-05-14-2	-	滾珠 Ball Bearing	182mm (7-1/5")	活動 109mm Swivel 109mm
150mm x 37.5mm (6" x 1-1/2")	180 kgs (396 lbs)	W全效輪 W Resolute	1151(D)-06-64-1	1151(D)-06-64-2	1151(D)-06-64-4	滾珠 Ball Bearing	188mm (7-1/2")	活動 115mm 剎車 137mm (短 踏板) 剎車 160mm (超 大踏板) Swivel 115mm Swivel W/Brake 137mm (Short Pedal) Swivel W/Brake 160mm (Extra Big Pedal)
150mm x 40mm (6" x 1-9/16")	250 kgs (550 lbs)	鐵芯NBR橡膠輪 NBR Rubber on Cast	1151(D)-06-04-1	1151(D)-06-04-2	1151(D)-06-04-4			
	350 kgs (770 lbs)	尼龍輪 Nylon	1151(D)-06-07-1	1151(D)-06-07-2	1151(D)-06-07-4			
	250 kgs (550 lbs)	CPD輪 CPD	1151(D)-06-49-1	1151(D)-06-49-2	1151(D)-06-49-4			
	250 kgs (550 lbs)	環保NBR橡膠輪 Non-marking Rubber on Cast	1151(D)-06-11-1	1151(D)-06-11-2	1151(D)-06-11-4			
	350 kgs (770 lbs)	WMRC輪 WMRC	1151(D)-06-45-1	1151(D)-06-45-2	1151(D)-06-45-4			
250 kgs (550 lbs)	WCPD輪 WCPD	1151(D)-06-79-1	1151(D)-06-79-2	1151(D)-06-79-4				
150mm x 42mm (6" x 1-5/8")	350 kgs (770 lbs)	鐵芯聚氨酯 PU on Cast	1151(D)-06-33-1	1151(D)-06-33-2	1151(D)-06-33-4			
	450 kgs (990 lbs)	QPU輪 QPU	1151(D)-06-80-1	1151(D)-06-80-2	1151(D)-06-80-4			
	350 kgs (770 lbs)	EPU輪 EPU	1151(D)-06-78-1	1151(D)-06-78-2	1151(D)-06-78-4			
	400 kgs (880 lbs)	EQPU輪 EQPU	1151(D)-06-81-1	1151(D)-06-81-2	1151(D)-06-81-4			
	350 kgs (770 lbs)	鋁芯AQPU輪(圓弧) QPU on AL Core (Round)	1151(D)-06-87-1	1151(D)-06-87-2	1151(D)-06-87-4			
150mm x 45.5mm (6" x 1-13/16")	220 kgs (485 lbs)	三星輪 Rubber on Cast	1151(D)-06-03-1	1151(D)-06-03-2	-			