



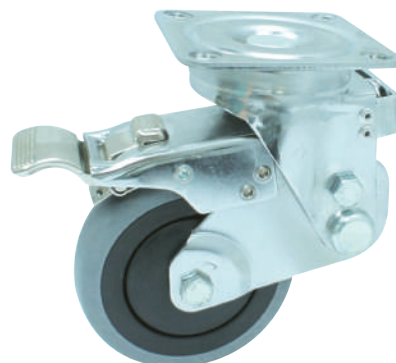
1115-L Series TW

特輕彈簧輪系列

Institutional Spring-loaded Caster

- 屬得勝專利產品，高避震力，針對電子產業與需要高度防震產品市場。
- Institutional version of spring-loaded caster. Ideal for chip industry and tool cart.

載重 Load
60-150 kg



▶▶ 特色區 Features



鋁剎
Total Lock Brake
with Aluminum Alloy Pedal



輪子可防塵蓋
Thread guard

▶▶ 輪子選項 Wheel Options



導電輪
E-Conductive



超級人造膠
TPR on PP Core



W全效輪
W Resolute Wheel



全效輪
Resolute



鋁芯AQP
QPU on AL Core



滾珠軸承
Ball Bearing

▶▶ 底板規格 TOP PLATE SIZE AND BOLT HOLE SPACING

腳輪尺寸 Caster Size	底板尺寸 Top Plate Size	底板孔距 Bolt Hole Spacing	安裝尼帽尺寸 Attaching Bolt Size
4", 5"	91 x 91 mm (3-9/16"x 3-9/16")	68 x 68 mm (2-11/16"x 2-11/16")	10 mm (3/8")

輪徑×輪寬 Diameter×Width	載重 Load	材質 Material	型號 Item No.			軸承 Bearing	總高 Overall Height	迴旋半徑 Swivel radius
			固定 Fixed	活動 Swivel	剎車 Brake			
100mm×32mm (4"×1-1/4")	60 kgs (130 lbs)	導電輪 E-Conductive	-	1115-04-17-2-L	1115-04-17-4-L	滾珠 Ball Bearing	155.5mm (6-1/8")	活動82.5mm 煞車105mm Swivel 82.5mm Swivel W/Center lock 105mm
	90 kgs (198 lbs)	超級人造膠 TPR on PP Core	-	1115-04-75-2-L	1115-04-75-4-L			
	130 kgs (286 lbs)	W全效輪 W Resolute Wheel	-	1115-04-48-2-L	1115-04-48-4-L			
	120 kgs (264 lbs)	全效輪 Resolute	-	1115-04-68-2-L	1115-04-68-4-L			
	140 kgs (308 lbs)	鋁芯AQP QPU on AL Core	-	1115-04-87-2-L	1115-04-87-4-L			
125mm×32mm (5"×1-1/4")	70 kgs (150 lbs)	導電輪 E-Conductive	-	1115-05-17-2-L	1115-05-17-4-L	滾珠 Ball Bearing	193 mm (7-5/8")	活動91.5mm 煞車105mm Swivel 91.5mm Swivel W/Center lock 105 mm
	100 kgs (200 lbs)	超級人造膠 TPR on PP Core	-	1115-05-75-2-L	1115-05-75-4-L			
	147 kgs (323 lbs)	W全效輪 W Resolute Wheel	-	1115-05-48-2-L	1115-05-48-4-L			
	140 kgs (308 lbs)	全效輪 Resolute	-	1115-05-68-2-L	1115-05-68-4-L			
	150 kgs (330 lbs)	鋁芯AQP QPU on AL Core	-	1115-05-87-2-L	1115-05-87-4-L			