



1109-HD Series 重型

美國機械輪系列

Heavy Duty/Low Profile Business Machine Caster

- 腳架採用高鋼性板材，配合熱處理珠道來達到極高的荷重與長時間的使用壽命，同一時間又能夠確保低重心的要求，適用於商業機械設備與電腦伺服器物料架與AGV（無人車）使用。其中的大底板附支撐腳的設計，可增大荷重，其支撐腳可調整高度並可隨意穩固地停放台車且腳片表面電著處理更提供高級外觀與更好的防鏽能力。
- Caster fork is made of high tensile pressed steel with harden raceway to provide long lasting service life and extreme high load capacity while maintain low profile and over all height. It is suitable for application like business machine, server rack and AGV. Caster with floor lock is designed to further increase the load capability and immobility function. Height is also adjustable for model with floor lock. Also the E-coat finish on the fork provides better finish and offers better protection against the rust.

載重 Load
250-500 kg



▶▶ 特色區 Features



側剎
Side Lock Brake

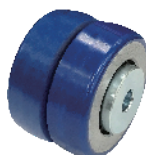
▶▶ 輪子選項 Wheel Options



尼龍輪
Nylon



金鋼輪
King Kong Wheel



ZQPU輪
QPU(Dual Wheels)



QPU輪
QPU



中管
Plain Bearing

滾珠軸承
Ball Bearing

▶▶ 底板規格 TOP PLATE SIZE AND BOLT HOLE SPACING

腳輪尺寸 Caster Size	底板尺寸 Top Plate Size	底板孔距 Bolt Hole Spacing	安裝尼帽尺寸 Attaching Bolt Size
2-1/2"x 1-15/16" 美國輪 2-1/2"x 1-15/16"	65 x 95 mm (2-3/4"x 3-3/4")	45 x 75 mm (1-3/4"x 3")	8 mm (5/16")
3" 美國輪 3"x1-15/16"	86 x 110 mm (3-3/8" x 4-5/16")	60 x 83 mm (2-3/8" x 3-1/4")	10 mm (3/8")

輪徑×輪寬 Diameter×Width	kg 載重 Load	材質 Material	型號 Item No.			軸承 Bearing	總高 Overall Height	迴旋半徑 Swivel radius
			固定 Fixed	活動 Swivel	剎車 Brake			
50 x 45mm (2" x 1-3/4")	350 kgs (770 lbs)	QPU輪 QPU	1109-02-80-1(H)	1109-02-80-2(H)	--	滾珠 Ball Bearing	75mm (3")	活動 50mm Swivel 50mm
	350 kgs (770 lbs)	ZQPU輪 QPU (Dual Wheels)	1109-02-101-1(H)	1109-02-101-2(H)	--	滾珠 Ball Bearing		
	250 kgs (550 lbs)	金鋼輪 King Kong Wheel	1109-02-100-1(H)	1109-02-100-2(H)	--	滾珠 Ball Bearing		
	200 kgs (440 lbs)	尼龍輪 Nylon	1109-02-07-1(H)	1109-02-07-2(H)	--	中管 Plain Bearing		



輪徑×輪寬 Diameter×Width	載重 Load	材質 Material	型號 Item No.			軸承 Bearing	總高 Overall Height	迴旋半徑 Swivel radius
			固定 Fixed	活動 Swivel	剎車 Brake			
62.5 x 45mm (2-1/2" x 1-3/4")	400 kgs (880 lbs)	QPU輪 QPU	1109-25-80-1(H)	1109-25-80-2(H)	1109-25-80-4(H)	滾珠 Ball Bearing	90.5mm (3-9/16")	活動 59.5mm 側煞 77mm Swivel 59.5mm Swivel W/Side Brake 77mm
	400 kgs (880 lbs)	ZQPU輪 QPU (Dual Wheels)	1109-25-101-1(H)	1109-25-101-2(H)	1109-25-101-4(H)	滾珠 Ball Bearing		
	450 kgs (990 lbs)	金鋼輪 King Kong Wheel	1109-25-100-1(H)	1109-25-100-2(H)	1109-25-100-4(H)	滾珠 Ball Bearing 中管 Plain Bearing		
	250 kgs (550 lbs)	尼龍輪 Nylon	1109-25-07-1(H)	1109-25-07-2(H)	1109-25-07-4(H)	滾珠 Ball Bearing		
75 x 45mm (3" x 1-3/4")	450 kgs (990 lbs)	QPU輪 QPU	1109-03-80-1(H)	1109-03-80-2(H)	1109-03-80-4(H)	滾珠 Ball Bearing	105.5mm (4-1/8")	活動 70mm 側煞 85.5mm Swivel 70mm Swivel W/Side Brake 85.5mm
	450 kgs (990 lbs)	ZQPU輪 QPU (Dual Wheels)	1109-03-101-1(H)	1109-03-101-2(H)	1109-03-101-4(H)	滾珠 Ball Bearing		
	500 kgs (1100 lbs)	金鋼輪 King Kong Wheel	1109-03-100-1(H)	1109-03-100-2(H)	1109-03-100-4(H)	滾珠 Ball Bearing 中管 Plain Bearing		
	300 kgs (660 lbs)	尼龍輪 Nylon	1109-03-07-1(H)	1109-03-07-2(H)	1109-03-07-4(H)	滾珠 Ball Bearing 中管 Plain Bearing		