

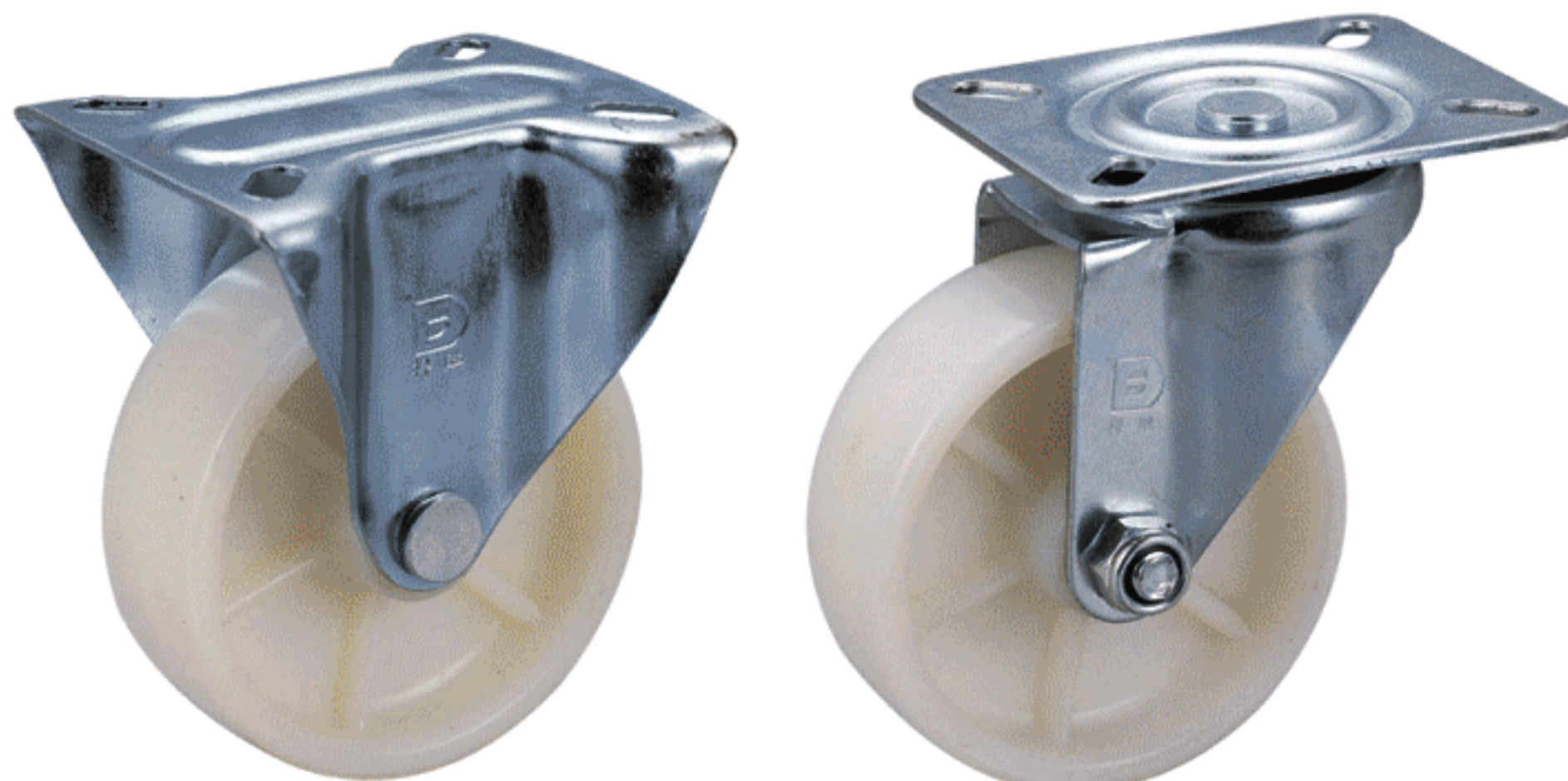


1126 Series 輕型 輕型系列

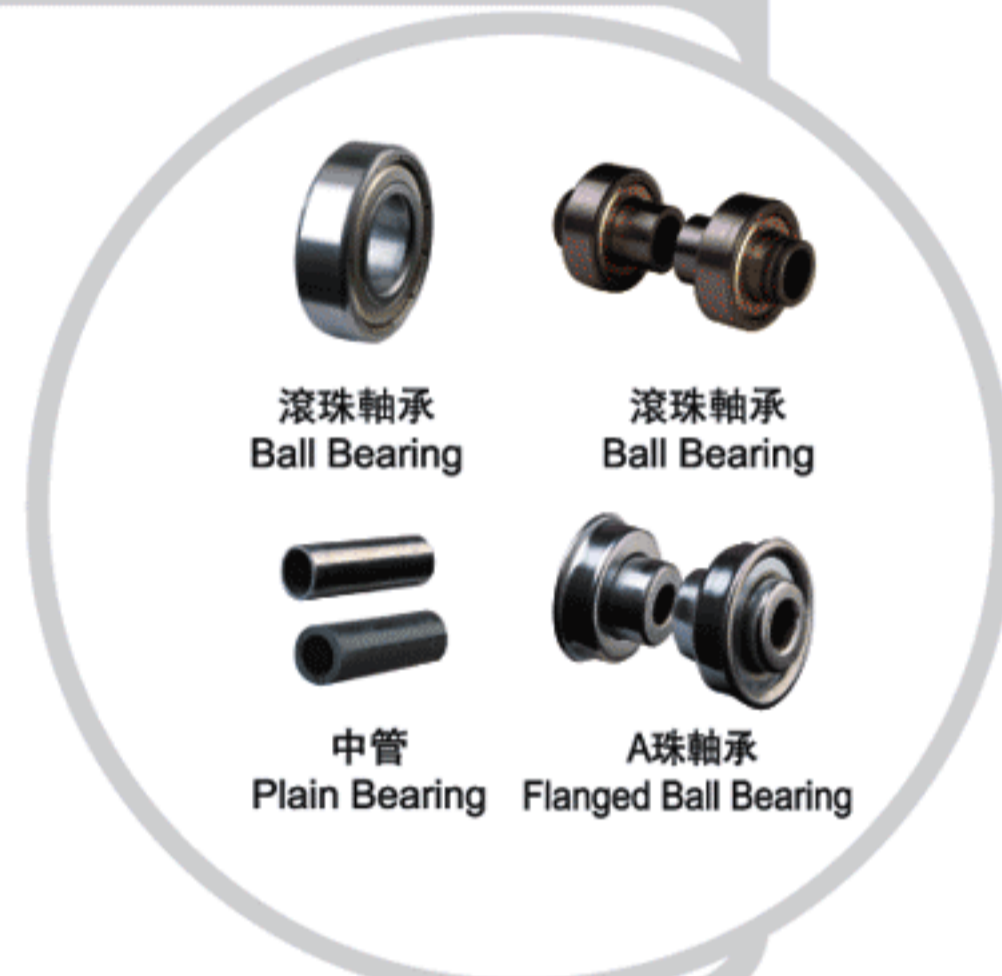
- 中輕型，適用於多種使用環境下的物流器材。採用特別腳架荷重結構設計，轉動靈活。

- Light-medium duty, for various logistic equipments. Special yoke design with easy swivel.

載重 Load
50-140 kg



輪子選項 Wheel Options



底板規格 TOP PLATE SIZE AND BOLT HOLE SPACING

編號 Suffix	底板尺寸 Top Plate Size	底板孔距 Bolt Hole Spacing	安裝尼帽尺寸 Attaching Bolt Size
1	85 x 105 mm (3-5/16"x 4-1/8")	60 x 80 mm (歐規孔距) 2-3/8"x 3-1/8"(European Plate)	8 mm (5/16")

輪徑×輪寬 Diameter×Width	載重 Load	材質 Material	型號 Item No.			軸承 Bearing	總高 Overall Height
			固定 Fixed	活動 Swivel	剎車 Brake		
100mmx32mm (4"x1-1/4")	90 kgs (198 lbs)	塑料輪 PP	1126-04-29-1	1126-04-29-2	--	中管 Plain Bearing	126mm (5")
	120 kgs (265 lbs)	尼龍輪 Nylon	1126-04-07-1	1126-04-07-2	--		
	140 kgs (305 lbs)	耐高溫輪 Hi-Temp	1126-04-25-1	1126-04-25-2	--		
	100 kgs (220 lbs)	超級人造膠 TPR on PP Core	1126-04-26-1	1126-04-26-2	--		
	120 kgs (265 lbs)	高科技耐磨聚氨酯 PU on PP Core	1126-04-31-1	1126-04-31-2	--	滾珠 Ball Bearing 中管 Plain Bearing	
	50 kgs (110 lbs)	灰胎輪 Gray Rubber on Steel/Plastic Core	1126-04-08-1	1126-04-08-2	--	A珠 Flanged Ball Bearing 中管 Plain Bearing	
	50 kgs (110 lbs)	黑胎輪 Black Rubber on Steel/Plastic Core	1126-04-09-1	1126-04-09-2	--	中管 Plain Bearing	
	80 kgs (175 lbs)	橡膠輪 Rubber	1126-04-06-1	1126-04-06-2	--	中管 Plain Bearing	
125mmx32mm (5"x1-1/4")	100 kgs (220 lbs)	塑料輪 PP	1126-05-29-1	1126-05-29-2	--	中管 Plain Bearing	153mm (6")
	140 kgs (305 lbs)	尼龍輪 Nylon	1126-05-07-1	1126-05-07-2	--		
	110 kgs (240 lbs)	超級人造膠 TPR on PP Core	1126-05-26-1	1126-05-26-2	--	滾珠 Ball Bearing 中管 Plain Bearing	
	130 kgs (285 lbs)	高科技耐磨聚氨酯 PU on PP Core	1126-05-31-1	1126-05-31-2	--		
	90kgs (198 lbs)	橡膠輪 Rubber	1126-05-06-1	1126-05-06-2	--	中管 Plain Bearing	
	60 kgs (132 lbs)	灰胎輪 Gray Rubber on Steel/Plastic Core	1126-05-08-1	1126-05-08-2	--	A珠 Flanged Ball Bearing 中管 Plain Bearing	
	60 kgs (132 lbs)	黑胎輪 Black Rubber on Steel/Plastic Core	1126-05-09-1	1126-05-09-2	--	中管 Plain Bearing	