



1122 Series 中重型 中重負載系列

- 採用一體成型腳架，外型美觀及耐用，可承載高荷重且旋轉靈活，適用於一般工廠搬運。

- DERSHENG'S 1122 Series are press-formed constructions, providing high performance in load capacity and aesthetical exterior at the same time.



載重 Load
120-290 kg

▶ 特色區 Features ▶ 輪子選項 Wheel Options



中刹
Center Lock Brake



鐵芯NBR橡膠輪
NBR Rubber on Cast



鐵芯聚氨酯
PU on Cast



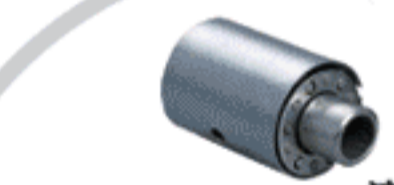
高科技耐磨聚氨酯
PU on PP Core



高科技耐磨聚氨酯(圓弧形)
PU on PP Core (Round Shape)



超級人造膠
TPR on PP Core



滾針軸承
Roller Bearing



滾珠軸承
Ball Bearing

滾珠軸承僅適用於高科技耐磨聚氨酯(圓弧形)
Only available for PU on PP Core(Round Shape)

▶ 底板規格 TOP PLATE SIZE AND BOLT HOLE SPACING

編號 Suffix	底板尺寸 Top Plate Size	底板孔距 Bolt Hole Spacing	安裝尼帽尺寸 Attaching Bolt Size
1	113 x 142 mm (4-1/2" x 5-5/8")	77x112 mm (3" x 4-7/16")	11 mm (7/16")

輪徑×輪寬 Diameter×Width	載重 Load	材質 Material	型號 Item No.			軸承 Bearing	總高 Overall Height
			固定 Fixed	活動 Swivel	剎車 Brake		
125mm×50mm (5"×2")	200 kgs (440 lbs)	高科技耐磨聚氨酯(圓弧形) PU on PP Core (Round Shape)	1122-05-43-1	1122-05-43-2	1122-05-43-4	滾珠 Ball Bearing	167mm (6-9/16")
	250 kgs (550 lbs)	鐵芯聚氨酯 PU on Cast	1122-05-33-1	1122-05-33-2	1122-05-33-4	滾針 Roller Bearing	
	200 kgs (440 lbs)	鐵芯NBR橡膠輪 NBR Rubber on Cast	1122-05-04-1	1122-05-04-2	1122-05-04-4		
	200 kgs (440 lbs)	高科技耐磨聚氨酯 PU on PP Core	1122-05-31-1	1122-05-31-2	1122-05-31-4		
	120 kgs (265 lbs)	超級人造膠 TPR on PP Core	1122-05-26-1	1122-05-26-2	1122-05-26-4		
150mm×50mm (6"×2")	220 kgs (485 lbs)	高科技耐磨聚氨酯(圓弧形) PU on PP Core (Round Shape)	1122-06-43-1	1122-06-43-2	1122-06-43-4	滾珠 Ball Bearing	192mm (7-1/2")
	270 kgs (595 lbs)	鐵芯聚氨酯 PU on Cast	1122-06-33-1	1122-06-33-2	1122-06-33-4	滾針 Roller Bearing	
	220 kgs (485 lbs)	高科技耐磨聚氨酯 PU on PP Core	1122-06-31-1	1122-06-31-2	1122-06-31-4		
	220 kgs (485 lbs)	鐵芯NBR橡膠輪 NBR Rubber on Cast	1122-06-04-1	1122-06-04-2	1122-06-04-4		
	140 kgs (305 lbs)	超級人造膠 TPR on PP Core	1122-06-26-1	1122-06-26-2	1122-06-26-4		
200mm×50mm (8"×2")	240 kgs (525 lbs)	高科技耐磨聚氨酯(圓弧形) PU on PP Core (Round Shape)	1122-08-43-1	1122-08-43-2	1122-08-43-4	滾珠 Ball Bearing	242mm (9-9/16")
	290 kgs (635 lbs)	鐵芯聚氨酯 PU on Cast	1122-08-33-1	1122-08-33-2	1122-08-33-4	滾針 Roller Bearing	
	240 kgs (525 lbs)	鐵芯NBR橡膠輪 NBR Rubber on Cast	1122-08-04-1	1122-08-04-2	1122-08-04-4		
	240 kgs (525 lbs)	高科技耐磨聚氨酯 PU on PP Core	1122-08-31-1	1122-08-31-2	1122-08-31-4		
	160 kgs (350 lbs)	超級人造膠 TPR on PP Core	1122-08-26-1	1122-08-26-2	1122-08-26-4		