



1151 Series

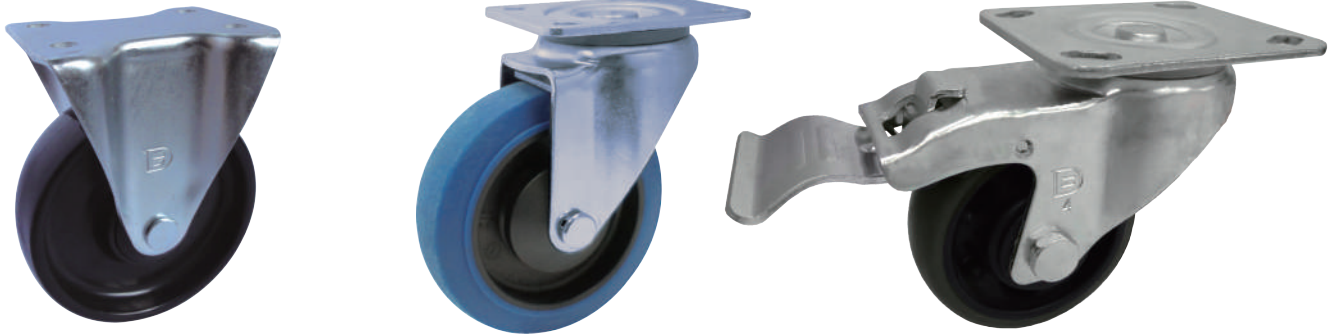
中重型

51欧规底板系列

Heavy Duty 1.5" Wide General Purposes Caster (European Style)

- 欧规底板·脚架采特别结构设计·特高荷重·3.5mm板·转动灵活·双刹制动·适用于中、重型台车。
- Pressed steel caster horn/ housing design for European market. Extreme heavy-duty, made of 3.5mm thick steel, swivel easily with high performance total lock brake, suitable for medium and heavy duty logistic equipment.

载重 Load
80-350 kg



特色区 Features








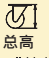

轮子选项 Wheel Options

高科技耐磨聚氨酯 PU on PP Core	超级人造胶(514) TPR on PP Core	全效轮(514) Resolute	WHDR轮 WHDR	导电轮 E-Conductive	超级人造胶(515) TPR on PP Core	全效轮(515) Resolute	滚珠轴承 Ball Bearing
							滚针轴承 Roller Bearing
W全效轮 W Resolute	W超级人造胶 WPPR	WPP轮 WPP	WMRC轮 WMRC	CPD轮 CPD	蓝色弹力轮 Blue Resilient Rubber Wheel	三明治轮 Sandwich Wheel	铝芯AQPU QPU On AL Core



底板规格 TOP PLATE SIZE AND BOLT HOLE SPACING

编号 Suffix	底板尺寸 Top Plate Size	底板孔距 Bolt Hole Spacing	安装尼帽尺寸 Attaching Bolt Size
1	85 x 105 mm (3-5/16" x 4-1/8")	60x80 mm(欧规孔距) 2-3/8"x3-1/8"(European Plate)	8 mm (5/16")



 轮径x轮宽 DiameterxWidth	 载重 Load	 材质 Material	 型号 Item No.			 轴承 Bearing	 总高 Overall Height	 回旋半径 Swivel radius
			固定 Fixed	活动 Swivel	刹车 Brake			
100mm x 31mm (4" x 1-1/4")	120kgs (265lbs)	高科技耐磨聚氨酯 PU on PP Core	1151-04-31-1	1151-04-31-2	1151-04-31-4	滚珠 Ball Bearing	130mm (5-1/16")	活动 90mm 刹车 137mm (短踏板) 刹车 160mm (超大踏板) Swivel 90mm Swivel W/Brake 137mm (Short Pedal) Swivel W/Brake 160mm (Extra Big Pedal)
	100kgs (220lbs)	超级人造胶 TPR on PP Core	1151-04-75-1	1151-04-75-2	1151-04-75-4			
	125kgs (275lbs)	全效轮 Resolute	1151-04-68-1	1151-04-68-2	1151-04-68-4			
	80kgs (176lbs)	导电轮 E-Conductive	1151-04-17-1	1151-04-17-2	1151-04-17-4			
	180kgs (400lbs)	WHDR 轮 WHDR	1151-04-66-1	1151-04-66-2	1151-04-66-4			
	135kgs (300lbs)	W全效轮 W Resolute	1151-04-48-1	1151-04-48-2	1151-04-48-4			
	100kgs (220lbs)	W超级人造胶 WPPR	1151-04-47-1	1151-04-47-2	1151-04-47-4			
	130kgs (285lbs)	WPP 轮 WPP	1151-04-46-1	1151-04-46-2	1151-04-46-4			
	180kgs (396lbs)	WMRC 轮 WMRC	1151-04-45-1	1151-04-45-2	1151-04-45-4			
100mm x 36mm (4" x 1-1/2")	160kgs (352lbs)	CPD 轮 CPD	1151-04-71-1	1151-04-71-2	1151-04-71-4	滚珠 Ball Bearing	130mm (5-1/16")	活动 90mm 刹车 137mm (短踏板) 刹车 160mm (超大踏板) Swivel 90mm Swivel W/Brake 137mm (Short Pedal) Swivel W/Brake 160mm (Extra Big Pedal)
	160kgs (352lbs)	蓝色弹力轮 Blue Resilient Rubber Wheel	1151-04-50-1	1151-04-50-2	1151-04-50-4			
	140kgs (308lbs)	超级人造胶 TPR on PP Core	1151-04-77-1	1151-04-77-2	1151-04-77-4			
	160kgs (352lbs)	全效轮 Resolute	1151-04-76-1	1151-04-76-2	1151-04-76-4			
	325kgs (715lbs)	铝芯AQPU(圆弧) QPU on AL Core(Round)	1151-04-87-1	1151-04-87-2	1151-04-87-4			
100mm x 40mm (4" x 1-9/16")	350kgs (770lbs)	铝芯AQPU(圆弧) QPU on AL Core(Round)	1151-04(40)-87-1	1151-04(40)-87-2	1151-04(40)-87-4	滚珠 Ball Bearing	130mm (5-1/16")	活动 90mm 刹车 137mm (短踏板) 刹车 160mm (超大踏板) Swivel 90mm Swivel W/Brake 137mm (Short Pedal) Swivel W/Brake 160mm (Extra Big Pedal)
125mm x 31mm (5" x 1-1/4")	130kgs (285lbs)	高科技耐磨聚氨酯 PU on PP Core	1151-05-31-1	1151-05-31-2	1151-05-31-4	滚珠 Ball Bearing	155mm (6-1/8")	活动 103mm 刹车 137mm (短踏板) 刹车 160mm (超大踏板) Swivel 103mm Swivel W/Brake 137mm (Short Pedal) Swivel W/Brake 160mm (Extra Big Pedal)
	110kgs (240lbs)	超级人造胶 TPR on PP Core	1151-05-75-1	1151-05-75-2	1151-05-75-4			
	147kgs (325lbs)	全效轮 Resolute	1151-05-68-1	1151-05-68-2	1151-05-68-4			
	90kgs (198lbs)	导电轮 E-Conductive	1151-05-17-1	1151-05-17-2	1151-05-17-4			
	200kgs (440lbs)	WHDR 轮 WHDR	1151-05-66-1	1151-05-66-2	1151-05-66-4			
	147kgs (325lbs)	W全效轮 W Resolute	1151-05-48-1	1151-05-48-2	1151-05-48-4			
	110kgs (240lbs)	W超级人造胶 WPPR	1151-05-47-1	1151-05-47-2	1151-05-47-4			
	150kgs (330lbs)	WPP 轮 WPP	1151-05-46-1	1151-05-46-2	1151-05-46-4			
	200kgs (440lbs)	WMRC 轮 WMRC	1151-05-45-1	1151-05-45-2	1151-05-45-4			
125mm x 36mm (5" x 1-1/2")	200kgs (440lbs)	CPD 轮 CPD	1151-05-71-1	1151-05-71-2	1151-05-71-4	滚珠 Ball Bearing	155mm (6-1/8")	活动 103mm 刹车 137mm (短踏板) 刹车 160mm (超大踏板) Swivel 103mm Swivel W/Brake 137mm (Short Pedal) Swivel W/Brake 160mm (Extra Big Pedal)
	250kgs (550lbs)	蓝色弹力轮 Blue Resilient Rubber Wheel	1151-05-50-1	1151-05-50-2	1151-05-50-4			
	160kgs (352lbs)	超级人造胶 TPR on PP Core	1151-05-77-1	1151-05-77-2	1151-05-77-4			
	180kgs (400lbs)	全效轮 Resolute	1151-05-76-1	1151-05-76-2	1151-05-76-4			
	250kgs (550lbs)	三明治轮 Sandwich Wheel	1151-05-40-1	1151-05-40-2	1151-05-40-4	滚针轴承 Roller Bearing		



 轮径x轮宽 DiameterxWidth	 载重 Load	 材质 Material	 型号 Item No.			 轴承 Bearing	 总高 Overall Height	 回旋半径 Swivel radius
			固定 Fixed	活动 Swivel	刹车 Brake			
125mm x 40mm (5" x 1-9/16")	350kgs (770lbs)	铝芯AQP(圆弧) QPU on AL Core(Round)	1151-05-87-1	1151-05-87-2	1151-05-87-4	滚珠 Ball Bearing	155mm (6-1/8")	活动 103mm 刹车 137mm (短踏板) 刹车 160mm (超大踏板) Swivel 103mm Swivel W/Brake 137mm (Short Pedal) Swivel W/Brake 160mm (Extra Big Pedal)
150mm x 31mm (6" x 1-1/4")	130kgs (285lbs)	高科技耐磨聚氨酯 PU on PP Core	1151-06-31-1	1151-06-31-2	1151-06-31-4	滚珠 Ball Bearing	188mm (7-1/2")	活动 115mm 刹车 137mm (短踏板) 刹车 160mm (超大踏板) Swivel 115mm Swivel W/Brake 137mm (Short Pedal) Swivel W/Brake 160mm (Extra Big Pedal)
	110kgs (240lbs)	超级人造胶 TPR on PP Core	1151-06-75-1	1151-06-75-2	1151-06-75-4			
	147kgs (325lbs)	全效轮 Resolute	1151-06-68-1	1151-06-68-2	1151-06-68-4			
	90kgs (198lbs)	导电轮 E-Conductive	1151-06-17-1	1151-06-17-2	1151-06-17-4			
	200kgs (440lbs)	WHDR轮 WHDR	1151-06-66-1	1151-06-66-2	1151-06-66-4			
	147kgs (325lbs)	W全效轮 W Resolute	1151-06-48-1	1151-06-48-2	1151-06-48-4			
	110kgs (240lbs)	W超级人造胶 WPPR	1151-06-47-1	1151-06-47-2	1151-06-47-4			
150mm x 42mm (6" x 1-5/8")	350kgs (770lbs)	铝芯AQP(圆弧) QPU on AL Core(Round)	1151-06-87-1	1151-06-87-2	1151-06-87-4	滚珠 Ball Bearing	188mm (7-1/2")	活动 115mm 刹车 137mm (短踏板) 刹车 160mm (超大踏板) Swivel 115mm Swivel W/Brake 137mm (Short Pedal) Swivel W/Brake 160mm (Extra Big Pedal)