



# 1109 Series 中型

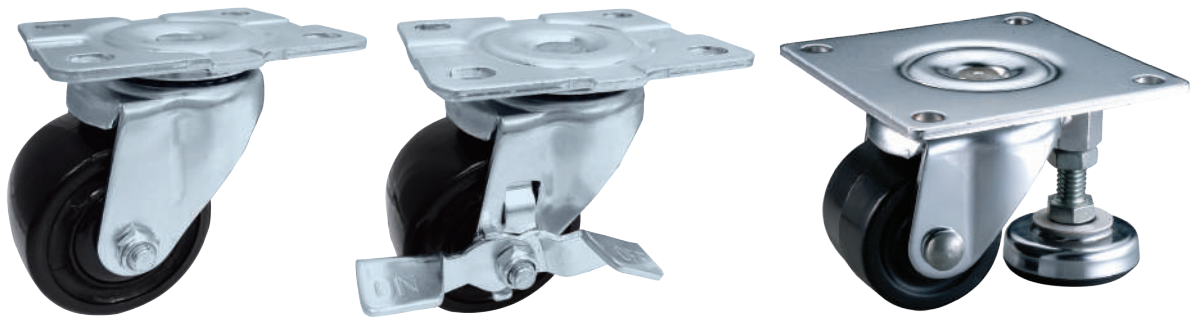
## 美國輪系列

### Medium Duty/Low Profile Business Machine Caster

- 採用高耐磨尼龍製成，輪寬較大是小輪中負載高的系列，適合荷重高、移動較少的商業機械設備。其中大底板附支撐腳的款式，可增大荷重，其支撐腳可調整高度並可隨意穩固地停放台車。
- Made of synthetic material with excellent abrasion resistance. Wide tread withstands heavy load, suitable for business machine. Item with floor lock is designed for extra heavy load and immobility function. Height is also adjustable for model with floor lock.



載重 Load  
50-400 kg



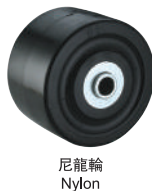
#### ▶▶ 特色區 Features

#### ▶▶ 輪子選項 Wheel Options

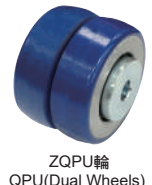


側剎  
Side Lock Brake

支撐腳  
Glide



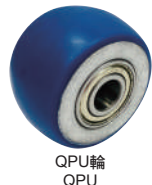
尼龍輪  
Nylon



ZQPU輪  
QPU(Dual Wheels)



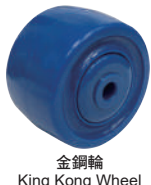
電木輪  
Phenolic



QPU輪  
QPU



塑料輪  
PP



金鋼輪  
King Kong Wheel



中管  
Plain Bearing

滾珠軸承  
Ball Bearing

滾針軸承  
Roller Bearing

#### ▶▶ 底板規格 TOP PLATE SIZE AND BOLT HOLE SPACING

腳輪尺寸 Caster Size	底板尺寸 Top Plate Size	底板孔距 Bolt Hole Spacing	安裝尼帽尺寸 Attaching Bolt Size
2"x 1" 美國輪 2"x 1"	58 x 70 mm (2-1/4"x 2-3/4")	40 x 55 mm (1-9/16"x 2-3/16")	8 mm (5/16")
2"x1"-15/16" 美國輪 2"x1"-15/16"	65 x 95 mm (2-3/4"x 3-3/4")	45 x 75 mm (1-3/4"x 3")	8 mm (5/16")
2"x1"-15/16" 美國輪大底板 2"x1"-15/16" Caster with floor Lock	120 x 120 mm (4-23/32"x 4-23/32")	95 x 95 mm (3-3/4"x 3-3/4")	10 mm (3/8")
2-1/2"x 1-15/16" 美國輪 2-1/2"x 1-15/16"	65 x 95 mm (2-3/4"x 3-3/4")	45 x 75 mm (1-3/4"x 3")	8 mm (5/16")
2-1/2" 美國輪大底板 2-1/2"x 1-15/16" Caster with floor Lock	120 x 120 mm (4-23/32"x 4-23/32")	95 x 95 mm (3-3/4"x 3-3/4")	10 mm (3/8")
3" 美國輪 3"x1-15/16"	86 x 110 mm (3-3/8" x 4-5/16")	60 x 83 mm (2-3/8" x 3-1/4")	10 mm (3/8")
3" 美國輪大底板 3"x1-15/16" Caster with floor Lock	120 x 120 mm (4-23/32"x 4-23/32")	95 x 95 mm (3-3/4"x 3-3/4")	10 mm (3/8")



▶ 插桿規格 CYLINDRICAL STEM SPECIFICATION

腳輪尺寸 Caster Size	插桿直徑X長度 Diameter x Length	孔位高度 Hole Height	孔尺寸 Bore Size
2"x 1"	11X38mm	—	C型銅扣環(Grip Ring)
2"x 1"	11X45mm	—	C型銅扣環(Grip Ring)

▶ 絲扣規格 THREADED STEM SPECIFICATION

腳輪尺寸 Caster Size	絲扣牙徑X長度 Threaded Size	腳輪尺寸 Caster Size	絲扣牙徑X長度 Threaded Size	腳輪尺寸 Caster Size	絲扣牙徑X長度 Threaded Size
2"x1"	M10X29mm	2"x1"	M12X29mm	2"x1"	3/8-16UNCx19
2"x1"	3/8-16UNCx25	2"x1"	3/8-16UNCx32	2-1/2"x1-15/16" 3"	M12X25mm
2-1/2"x1-15/16" 3"	3/8-16UNCx25	2-1/2"x1-15/16" 3"	1/2-12UNCx25	2-1/2"x1-15/16" 3"	1/2-13UNCx25
2-1/2"x1-15/16" 3"	3/4-10UNCx25				

▶ 空鉚規格 SINGLE BOLT HOLE

腳輪尺寸 Caster Size	孔徑 Centre Hole
2"x1-15/16" 2-1/2"x1-15/16" 3"	8.2mm

輪徑×輪寬 Diameter×Width	載重 Load	材質 Material	型號 Item No.			軸承 Bearing	總高 Overall Height	迴旋半徑 Swivel radius
			固定 Fixed	活動 Swivel	剎車 Brake			
50mm x 25mm (2" x 1")	70 kgs (150 lbs)	尼龍輪 Nylon	1109-02-07-1	1109-02-07-2	1109-02-07-4	中管 Plain Bearing	70mm (2-3/4")	活動 47.5mm 煞車 54mm Swivel 47.5mm Swivel W/Brake 54mm
	50 kgs (110 lbs)	塑料輪 PP	1109-02-29-1	1109-02-29-2	1109-02-29-4			
50mm x 45mm (2 x 1-3/4")	300 kgs (660 lbs)	QPU輪 QPU	1109-02-80-1	1109-02-80-1	--	滾珠軸承 Ball Bearing	73mm (2-7/8")	活動 44mm Swivel 44mm
	300 kgs (660 lbs)	ZQPU輪 QPU(Dual Wheels)	1109-02-101-1	1109-02-101-2	--			
	250 kgs (550 lbs)	尼龍輪 Nylon	1109-02-07-1	1109-02-07-2	--	滾珠軸承 Ball Bearing 中管 Plain Bearing		
	200 kgs (440 lbs)	金鋼輪 King Kong Wheel	1109-02-100-1	1109-02-100-2	--	滾珠軸承 Ball Bearing 中管 Plain Bearing		
62.5mm x 45mm (2-1/2" x 1-3/4")	300 kgs (660 lbs)	QPU輪 QPU	1109-25-80-1	1109-25-80-2	1109-25-80-4	滾珠軸承 Ball Bearing	91mm (3-3/5")	活動60.5mm 煞車65.5mm Swivel 60.5mm Swivel W/Brake 65.5mm
	300 kgs (660 lbs)	ZQPU輪 QPU(Dual Wheels)	1109-25-101-1	1109-25-101-2	1109-25-101-4			
	250 kgs (550 lbs)	尼龍輪 Nylon	1109-25-07-1	1109-25-07-2	1109-25-07-4			
	140 kgs (305 lbs)	塑料輪 PP	1109-25-29-1	1109-25-29-2	1109-25-29-4			
	350 kgs (770 lbs)	金鋼輪 King Kong Wheel	1109-25-100-1	1109-25-100-2	1109-25-100-4	滾珠軸承 Ball Bearing 中管 Plain Bearing		
75mm x 45mm (3" x 1-3/4")	300 kgs (660 lbs)	QPU輪 QPU	1109-03-80-1	1109-03-80-2	1109-03-80-4	滾珠軸承 Ball Bearing	102.5mm (4-1/25")	活動68.4mm 煞車68.4mm Swivel 68.4mm Swivel W/Brake 68.4mm
	300 kgs (660 lbs)	ZQPU輪 QPU(Dual Wheels)	1109-03-101-1	1109-03-101-2	1109-03-101-4			
	300 kgs (660 lbs)	尼龍輪 Nylon	1109-03-07-1	1109-03-07-2	1109-03-07-4	滾珠軸承 Ball Bearing 中管 Plain Bearing		
	185 kgs (405 lbs)	塑料輪 PP	1109-03-29-1	1109-03-29-2	1109-03-29-4	滾珠軸承 Ball Bearing		
	225 kgs (500 lbs)	電木輪 Phenolic	1109-03-25-1	1109-03-25-2	1109-03-25-4	滾針 Roller Bearing		
	400 kgs (880 lbs)	金鋼輪 King Kong Wheel	1109-03-100-1	1109-03-100-2	1109-03-100-4	滾珠軸承 Ball Bearing 中管 Plain Bearing		